



ABF Value Converter

Copyright © 2000-2007 ABF software, Inc.

Table of Contents

Part I Introduction	1
1 Overview	1
2 License agreement	2
3 How to install and uninstall	4
4 How to register	4
5 Contact information	5
6 Credits	6
Part II How to use	6
1 Navigation	6
2 Unit conversions	8
3 Math calculations	9
4 Geometric constructions	10
Part III Options	10
1 General settings	10
2 Interface options	12
3 Upgrade	13

1 Introduction

1.1 Overview

Program overview



ABF Value Converter is an application for measurement units conversion. This software easily converts various measurement values into any other possible ones. Inches to centimetres, pounds to kilograms, Fahrenheit to Celsius... and more than **5000** other conversions, grouped according to categories, such as: **Area, Distance, Fuel Consumption, Information, Mass, Power, Prefixes, Pressure, Speed, Temperature, and Volume**. **ABF Value Converter** also calculates the values of many mathematical functions, as well as makes it possible to conduct geometric constructions and calculations for some figures.

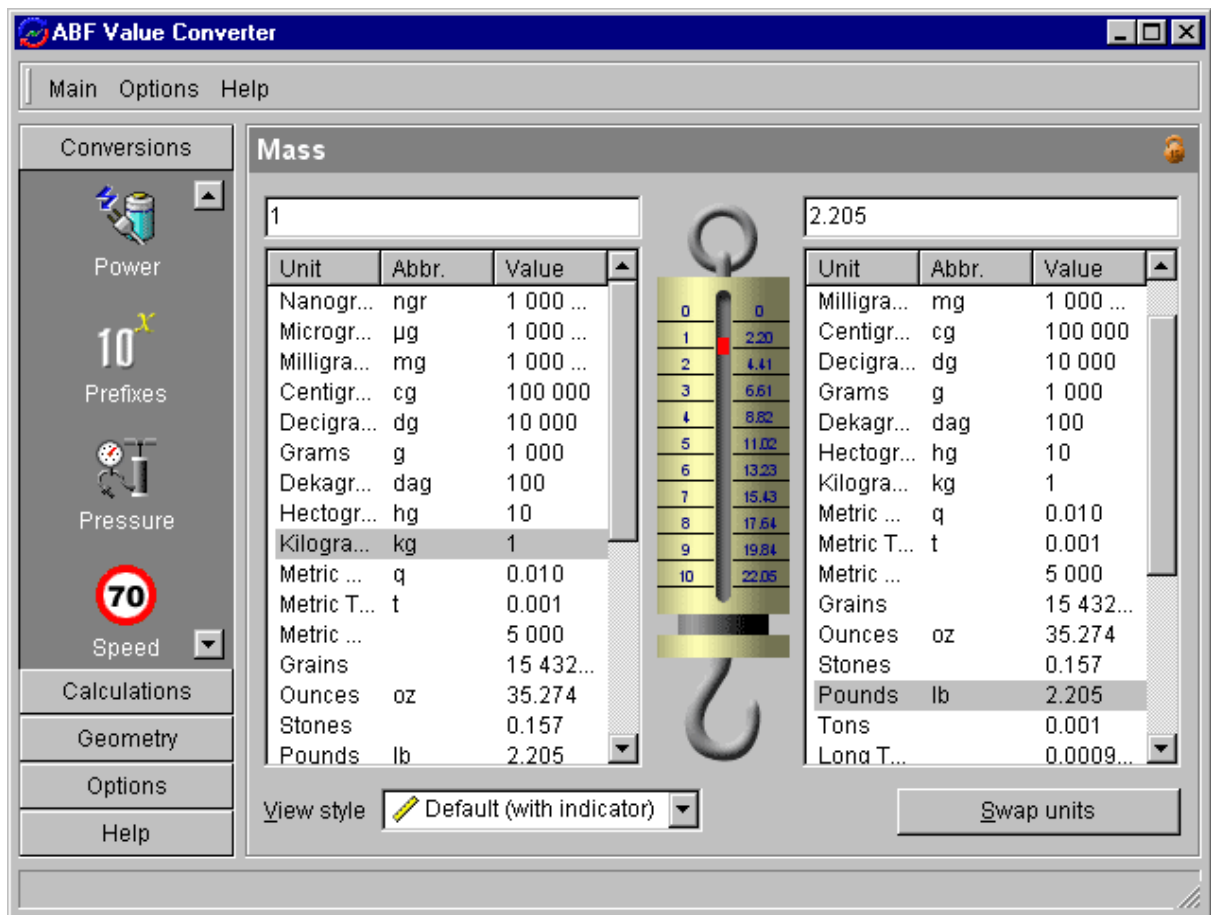


Figure 1: ABF Value Converter.

ABF Value Converter contains **11** conversion calculators (one per measurement group), **3** geometric calculators, **2** calculators of the most common functions and a converter between different number systems such as Dec, Hex, Bin and Roman. The user interface of this program is based upon opinions of different users. The Outlook-styled bar makes navigation easy and convenient. Program interface is customized, so the users can change it, according to their preferences.

ABF Value Converter has a number of features that extend the usage: auto run at the system start up, system tray icon, upgrading from the web, and many others. **ABF Value Converter** is compatible with **Windows 95/98/Me/NT4/2000/XP**. Installer and uninstaller are present. Large fonts are fully supported. The program has a huge help manual, so use **F1** key wherever you need

How to use

ABF Value Converter is very easy to use. Just select a conversion or calculation you want and enter the value. Read following topics for details: [Navigation](#), [Unit conversions](#), [Math calculations](#), [General settings](#).

Requirements

- Windows 98/Me/NT4/2000/XP.

[ABF Value Converter](#) is product of ABF software, Inc.
Copyright © 2000-2007 ABF software, Inc. All rights reserved.

1.2 License agreement

SOFTWARE LICENSE AGREEMENT

You should carefully read the following terms and conditions prior to using this software.

License Agreement

=====

This is the End User License Agreement (the "AGREEMENT") is a legal agreement between you ("LICENSEE"), the end-user, and ABF software, Inc. ("OWNER"), the manufacturer and the copyright owner, for the use of the "ABF Value Converter" software product ("SOFTWARE").

By using this Software or storing this program on a computer drive (or other media), you are agreeing to be bound by the terms of this Agreement. If you do not agree with the terms of this Agreement, please remove this Software from your system.

This Software is not Freeware. However, you may install an Evaluation Version of this Software to test and evaluate the application during the Trial Period. If the program meets your requirements, and you wish to continue using the Software, after the Trial Period has ended, you have to purchase the Registered Version. If you do not want to continue using Software after the Trial Period, please remove this Software from your system.

You accept responsibility for any network usage costs or any other costs, incurred by using this Software.

Trial Period

=====

There is a free 30-day Trial Period for this Software.

Evaluation Version

=====

The Evaluation Version allows you to test and evaluate characteristics, features, and quality of this Software. You can also test the compatibility of the Software with your hardware and your operating system. The Evaluation Version may have some restricted features or limitations. Using this Software after the Trial Period without registration violates copyright laws and may result in severe civil and criminal penalties.

Registered Version

=====

The Registered Version has no restricted features or limitations. Upon enabling the registered copy of this Software (one per each license), you can either choose to install the Software on one or more computers for your individual use, or install it on a single workstation, used consecutively by multiple users. However, you cannot do both.

Registration Key

=====

The Registration Key may come as an unlock code, password, algorithm, or a service file. The Evaluation Version becomes Registered after the Registration Key has been applied. The Registration Key can be obtained directly from OWNER or from its authorized dealer or representative only. You can only use the Registration Key that you own or have permissions to use, as an employee or member of a licensed group. You must not publicize or distribute the Registration Key (or a part of it) without the permission of OWNER.

Distribution

=====

The Evaluation Version of this Software may be distributed freely through on-line services, bulletin boards, or other forms of electronic media, as long as the files are distributed in their entirety. Computer Magazines/Archives are authorized to distribute the Evaluation Version on any Cover Disk or CD-ROM without an individual permission.

RESTRICTIONS

=====

YOU MAY NOT ALTER THIS SOFTWARE IN ANY WAY, INCLUDING CHANGING OR REMOVING ANY MESSAGES OR WINDOWS. YOU MAY NOT DECOMPILE, REVERSE ENGINEER, DISASSEMBLE OR OTHERWISE REDUCE THIS SOFTWARE TO A HUMAN PERCEIVABLE FORM. YOU MAY NOT MODIFY, RENT OR RESELL THIS SOFTWARE FOR PROFIT, OR CREATE ANY DERIVATIVE WORKS, BASED UPON THIS SOFTWARE. PUBLICATION OR DISTRIBUTING OF THE REGISTRATION KEY OR SOME OF ITS PART IS STRICTLY PROHIBITED!

DISCLAIMER

=====

THIS SOFTWARE IS PROVIDED ON AN "AS IS" BASIS WITHOUT WARRANTY OF ANY KIND, EXPRESSED OR IMPLIED, INCLUDING BUT NOT LIMITED TO THE IMPLIED WARRANTIES OF MERCHANTABILITY AND SUITABILITY FOR A PARTICULAR PURPOSE. THE PERSON USING THE SOFTWARE BEARS ALL RISK AS TO THE QUALITY AND PERFORMANCE OF THE SOFTWARE. OWNER WILL NOT BE LIABLE FOR ANY SPECIAL, INCIDENTAL, CONSEQUENTIAL, INDIRECT OR SIMILAR DAMAGES DUE TO LOSS OF DATA OR ANY OTHER REASON, EVEN IF OWNER OR AN AGENT OF OWNER HAS BEEN ADVISED OF THE POSSIBILITY OF SUCH DAMAGES. IN NO EVENT WILL OWNER BE LIABLE FOR COSTS OF ANY DAMAGES, EXCEEDING THE PRICE PAID FOR THE SOFTWARE LICENSE, REGARDLESS OF THE FORM OF THE CLAIM. YOU ACKNOWLEDGE THAT YOU HAVE READ THIS LICENSE,

UNDERSTOOD IT, AND AGREED TO BE BOUND BY ITS TERMS.

1.3 How to install and uninstall

How to install?

- If you have got the self extracting installation package named **abfValueConverterInstall.exe** - just run it and follow the setup instructions.
- If you have got the compressed archive file named like **abfVC.zip** or **abfVC.rar** - unpack it to the temporary folder, run the **abfValueConverterInstall.exe** file and follow the setup instructions.

How to uninstall?

(We really hope, you will never do it :))

1. Choose **Settings/Control Panel** from the **Start** menu.
2. Open **Add/Remove Programs** applet.
3. Select **ABF Value Converter** item and click **Add/Remove** button.

[ABF Value Converter](#) is product of ABF software, Inc.
Copyright © 2000-2007 ABF software, Inc. All rights reserved.

1.4 How to register

Why the program should be registered?

ABF Value Converter is distributed on the **Try Before You Buy** basis. The evaluation version of this software will only work for **15** days and will show a **trial reminder** ([Figure 2](#)). All limitations will be removed as soon as you register your copy of **ABF Value Converter**.

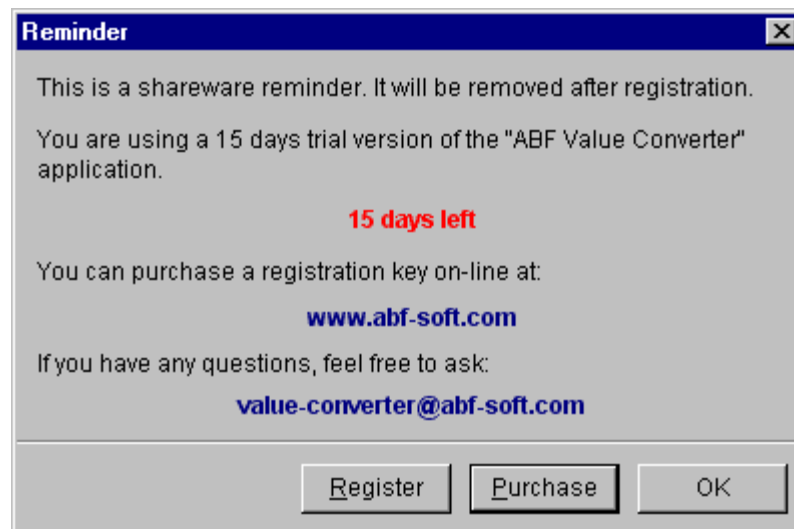


Figure 2: Trial reminder.

How to register?

At first, you should purchase the registration key. You can do it on-line via the software registration service by credit card, bank transfer or check. Please visit the registration page (<http://www.abf-soft.com/buy.shtml>) to purchase the key. It costs only **\$19.95** for the single license. There are some sale propositions for multi-licenses.

Note: The price may change.

After purchasing you will receive an e-mail with registration key and instructions. You can enter the key in two ways:

1 way: The registration e-mail has a **reg.key** file in the attachment. Run this file (simply click on the attachment icon in Outlook/Outlook Express) it will add the registration data directly into the system registry.

2 way: Click on the **Register** item in the main menu or **Register** button in the **About** dialog. key input form will appear ([Figure 3](#)).

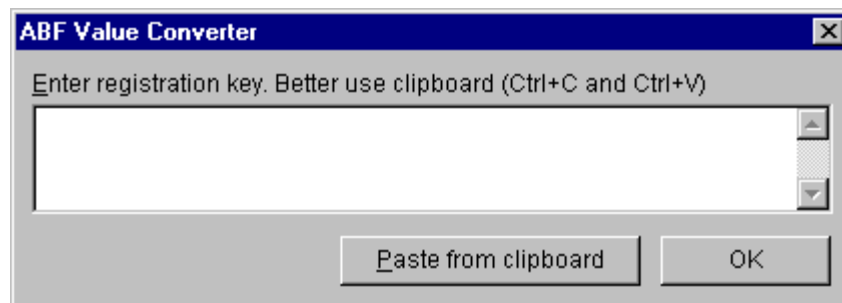


Figure 3: Registration key input form.

The registration key is a long sequence of different chars, so don't try to type it manually. Use the clipboard to copy (**Ctrl+C**) and paste (**Ctrl+V**) the key. Press **OK** button.

At last, restart the **ABF Value Converter**. If all steps are done right, the **trial reminder** ([Figure 2](#)) will not appear anymore and the registration information will be shown in the **About** dialog ([Figure 4](#)).



Figure 4: Registration information in the About dialog.

[ABF Value Converter](#) is product of ABF software, Inc.
Copyright © 2000-2007 ABF software, Inc. All rights reserved.

1.5 Contact information

If you have any problems with **ABF Value Converter**, first make sure that you have the latest version

of the software. The problem seems to be solved in it. The latest version always can be downloaded [here](#). If this doesn't help, feel free to contact us:

<mailto:support@abf-soft.com>

[ABF Value Converter](#) is product of ABF software, Inc.
Copyright © 2000-2007 ABF software, Inc. All rights reserved.

1.6 Credits

The **ABF Value Converter** is created by **ABF software, Inc.** (<http://www.abf-soft.com>)

Project leader
KARPOLAN

Programming
KARPOLAN
Tanya Vlaskina

Marketing
Eugene Goncharenko

Help and manual
ABF software, Inc. Team

Special thanks to
Borland - for great software developing tools, especially for Delphi (www.borland.com).
Dream Company - for powerful Outlook-styled side bar control (www.dream-com.com).
EC Software - for Help&Manual authoring tool (www.ec-software.com).
Ethalone Solutions, Inc. - for great Ghost Installer (www.ethalone.com).
Hannes Breuer - for the AnalogMeter component.
All beta testers - for testing, new ideas and bug reporting.
All registered users - for buying, new ideas and inspiration of us.

[ABF Value Converter](#) is product of ABF software, Inc.
Copyright © 2000-2007 ABF software, Inc. All rights reserved.

2 How to use

2.1 Navigation

You can navigate program using a menu or **SideBar** ([Figure 6](#)).

Navigation SideBar

Navigation bar ([Figure 6](#)) of this program is Outlook-styled. Use the **SideBar** to switch between program sections.



Figure 6: Navigation SideBar.

SideBar contains 5 groups:

1. **Conversions** - selector of conversions by measurement group. See [Conversions Overview](#) for details.
2. **Calculations** - selector of math calculations. See [Calculations Overview](#) for details.
3. **Geometry** - selector of geometry calculations. See [Geometry Overview](#) for details.
4. **Options** - program settings and options group.

General Settings - opens a program settings section. See [General Settings](#) for details.

Interface Options - opens an interface options section. See [Interface Options](#) for details.

Upgrade - upgrades from the web. See [Upgrade](#) topic for details.

5. **Help** - help and information group.

About - shows information about the program, authors and credits.

Help - opens the help manual.

Purchase - opens the web page (www.abf-soft.com/buy.shtml) where you can buy the program.

Register - allows you enter the [registration key](#). This icon is present in the evaluation (trial) version only.

Web Site - opens a web site of this program (www.abf-soft.com/value-converter.shtml). You can read information about program and download a new release there.

You can change the order of icons by dragging them with the mouse. Icons can be shown in 2 ways, **Large** or **Small**, use popup menu of the **SideBar** to change the icons appearance.

2.2 Unit conversions

Conversion of measurement units is a main function of this program. All conversions are separated to different groups, such as **Area**, **Distance**, **Volume**, and so on. Each conversion group has own calculator. All calculators have same style, so all of them are easy and same to use.

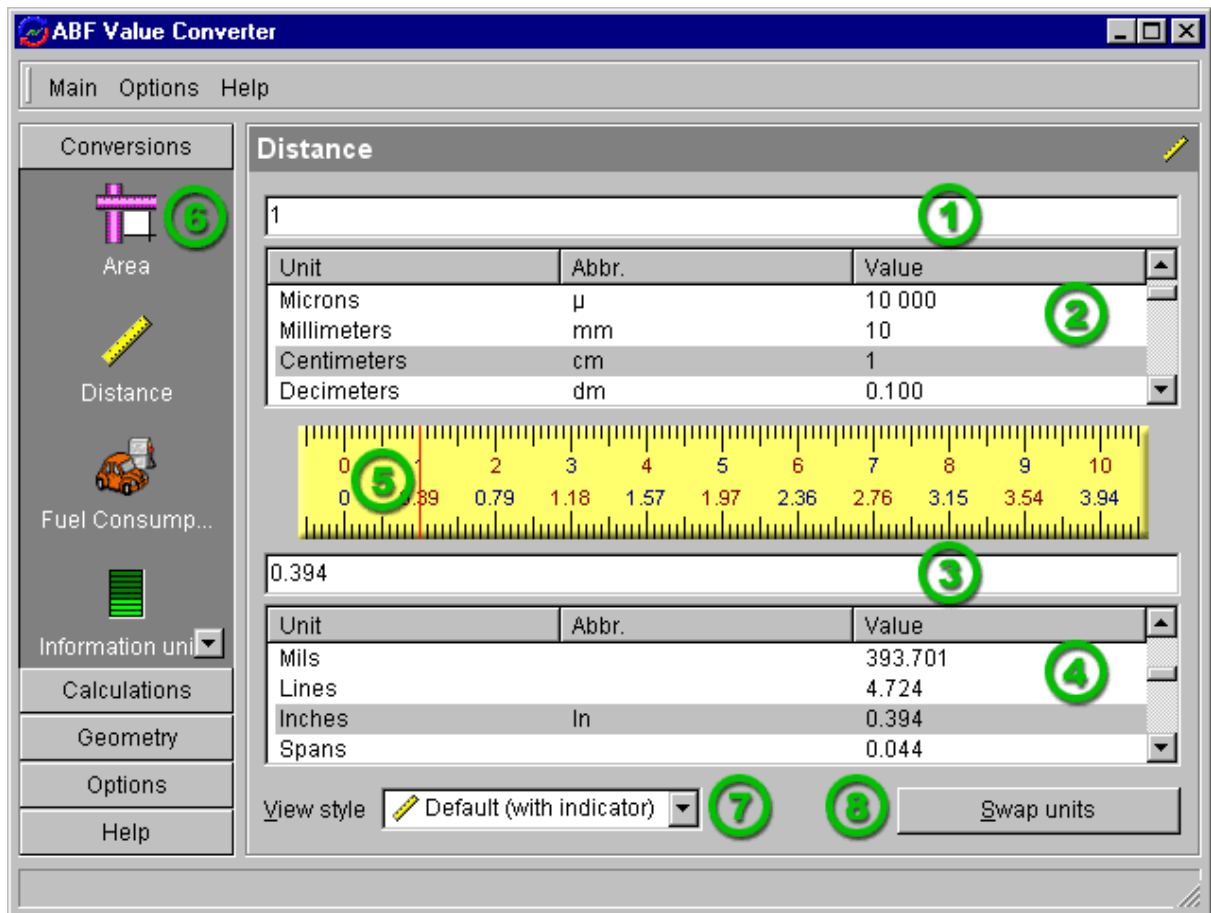


Figure 7: Appearance of the Conversion Calculator.

Conversion calculators contain:

1. **Input (source) editor** - input value to convert here.
2. **Source unit selector** - select the measurement unit of the input value here.
3. **Output (destination) editor** (read only) - result of conversion will be placed here. You can use **Ctrl+C** to copy this value to the clipboard.
4. **Destination unit selector** - select the measurement unit of the result value here.
5. Some calculators have an **interactive graphic indicator** that helps you visually compare input and output units. Also the **indicator** allows change the input value by mouse.
6. **Conversion group** of the **SideBar** - allows switch between conversion calculators.
7. **View style selector** - allows change view style of all conversion calculators at once.
8. **Swap units button** - changes input unit with output unit and vice versa.

How to convert

1. Select a necessary conversion calculator. Use an associated icon in the **Conversion** group of the **SideBar** ([Figure 7; Pos 6](#)).
2. Input the value you want to convert in the **Input (source) editor** ([Figure 7; Pos 1](#)).
3. Select a measurement unit of the input value in the **Source unit selector** ([Figure 7; Pos 2](#)).
4. Select a measurement unit of the output value in the **Destination unit selector** ([Figure 7; Pos 4](#)).

After these steps the converted value will be placed in the **Output (destination) editor** ([Figure 7; Pos 3](#)). Also see **Value** columns of **unit selectors**, converted values for each measurement unit are placed there.

View styles

All calculators can be shown in 3 different styles. This feature allows change a look of all calculators as you want:

- **Default** (with indicator) - input and output elements are split as designed. **Interactive graphic indicator** ([Figure 7; Pos 5](#)) is visible.
- **Horizontal split** - input and output elements are split horizontally.
- **Vertical split** - input and output elements are split vertically.

You can change the view style using the **combobox** ([Figure 7; Pos 7](#)) or **popup menu**. Selected view style is applied to all calculators at once.

Unit selectors

All **unit selectors**, both input and output, have same style. Generic **unit selector** contains three columns by default:

1. **Units** - contains names of measurement units.
2. **Abbr.** - contains abbreviations of measurement units.
3. **Value** - contains converted values for each unit.

You can sort content of **unit selectors** by any column, click on the column's header to change the order. Columns can be moved by mouse. All **unit selectors** have powerful **popup menus**.

[ABF Value Converter](#) is product of ABF software, Inc.
Copyright © 2000-2007 ABF software, Inc. All rights reserved.

2.3 Math calculations

ABF Value Converter allows you to perform different mathematic calculation. There are following math calculation groups:

1. Conversion between number systems
2. Miscellaneous algebraic calculations
3. Trigonometric and hyperbolic calculations

You can select a needful math group using a menu or **SideBar** ([Figure 6](#)).

[ABF Value Converter](#) is product of ABF software, Inc.
Copyright © 2000-2007 ABF software, Inc. All rights reserved.

2.4 Geometric constructions

ABF Value Converter also makes it possible to conduct geometric constructions and calculations for some figures, such as:

1. Triangle
2. Parallelogram
3. Circle and Sphere

You can select a needful geometric construction using a menu or **SideBar** ([Figure 6](#)).

[ABF Value Converter](#) is product of ABF software, Inc.
Copyright © 2000-2007 ABF software, Inc. All rights reserved.

3 Options

3.1 General settings

ABF Value Converter has a number of settings that allow tune up the application according to user's preferences. **General Settings** is accessible in the **Options** group of the **SideBar** ([Figure 6](#)) or through menu.

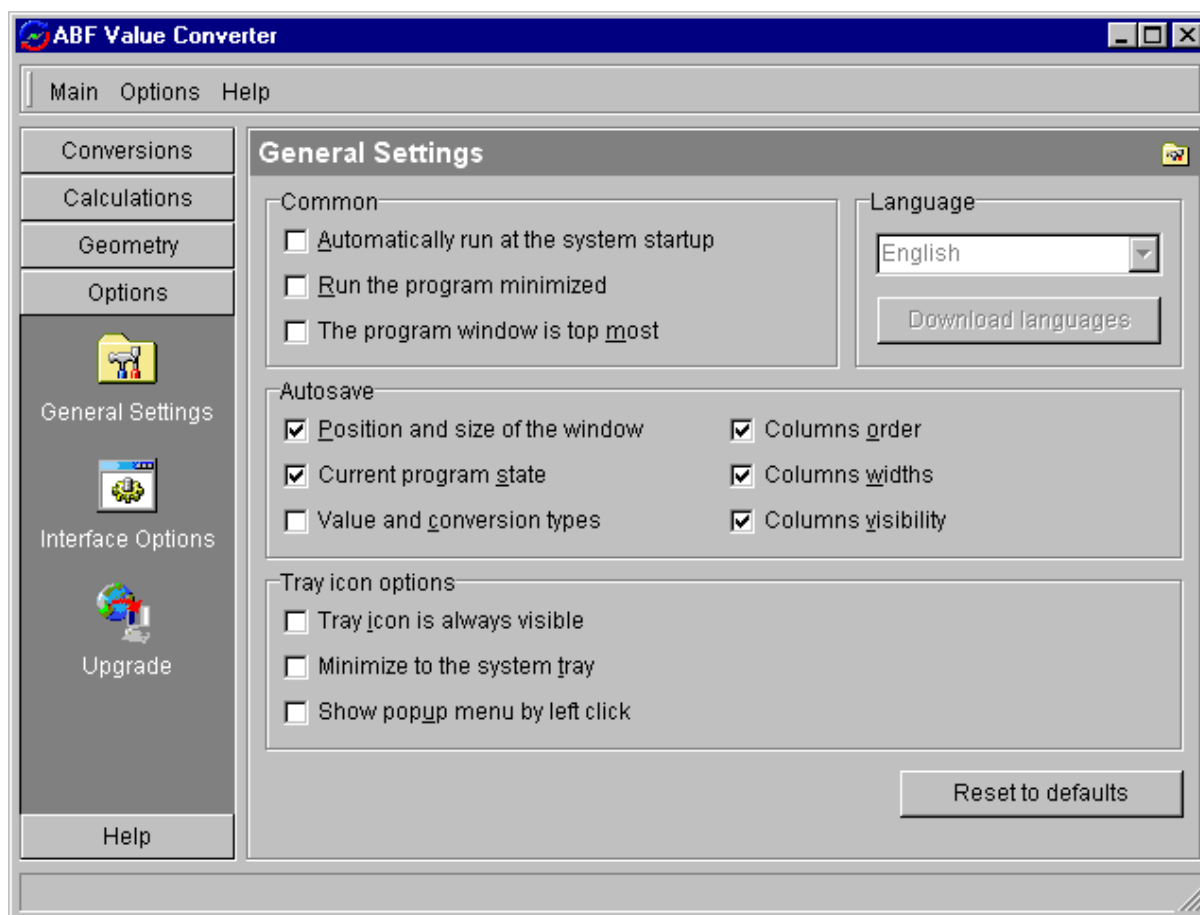


Figure 8: General Settings.

Common settings of the program:

- **Automatically run at the system start-up** - check this options if you want **ABF Value Converter** always runs at the system start-up, logon, restart, and so on.
- **Run the program minimized** - check this options if the program should run in the minimized mode as default. Very useful if the program always runs at the system start-up.
- **The program window is top most** - check this option if you want the main window of the program to be over all other windows.

Language settings are not supported in the current version.

Autosave settings determine which program settings and options will be saved on the program closing and will be automatically restored on the program start.

Tray icon options determine behaviour of an icon in the system tray (near the clock):

- **Tray icon is always visible** - check this options if tray icon should always be visible independently of program state.
- **Minimize to the system tray** - check this options if the program should minimize itself to the system tray.
- **Show popup menu by left click** - check it if you want to show a popup menu by left click on the tray icon.

Use the **Reset to defaults** button to reset all **General settings** to values by default.

[ABF Value Converter](#) is product of ABF software, Inc.
Copyright © 2000-2007 ABF software, Inc. All rights reserved.

3.2 Interface options

ABF Value Converter has very flexible user interface. Some of interface settings can be changed by user in the **Interface Options** section. To open this section click an icon in the **Options** group of the **SideBar** ([Figure 6](#)) or an according menu item.

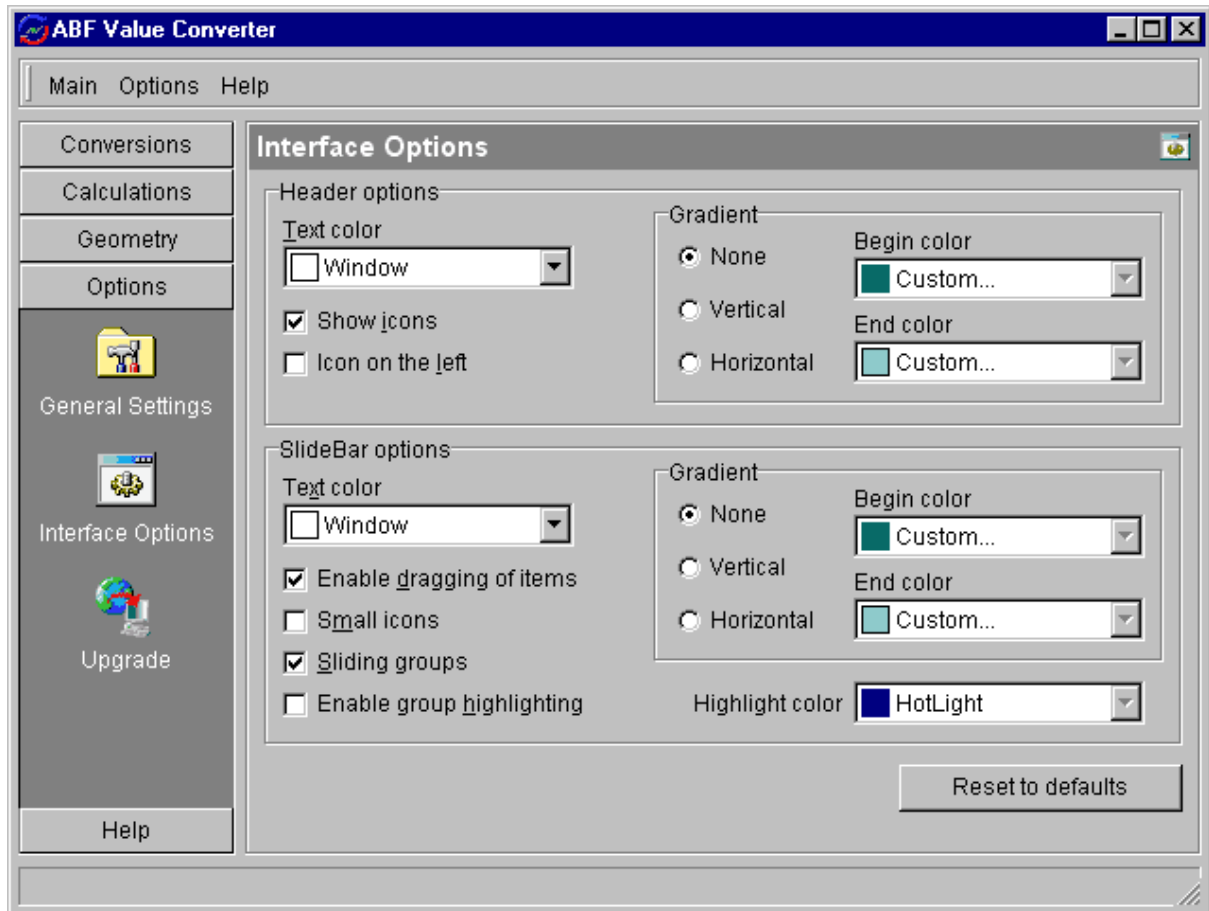


Figure 9: Interface options.

A **Header** options determines appearance of the program section header.

A **SideBar** options determines appearance and functionality of the **SideBar** ([Figure 6](#)).

This is an example of tuned **ABF Value Converter** interface:

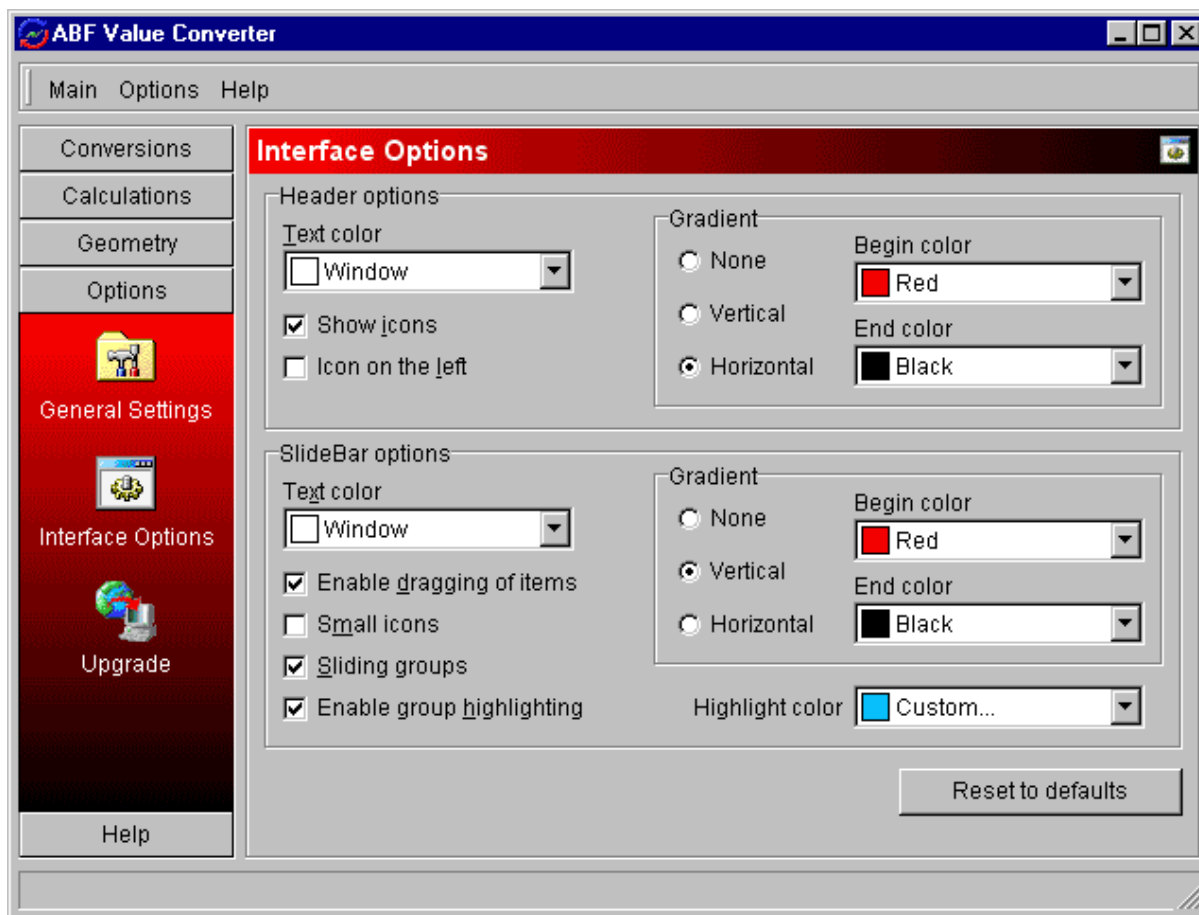


Figure 10: Example of tuned interface

Use the **Reset to defaults** button to reset all **Interface options** to values by default.

[ABF Value Converter](#) is product of ABF software, Inc.
Copyright © 2000-2007 ABF software, Inc. All rights reserved.

3.3 Upgrade

ABF Value Converter can upgrade itself from the web. In order to obtain an upgrade, you should be connected to the Internet. The application will check whether the new version is available:

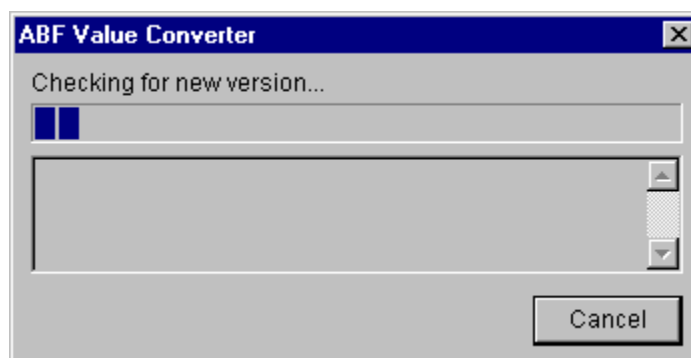


Figure 11: Checking for new version.

If the new version has been found, press appeared **Upgrade** button to complete the process.

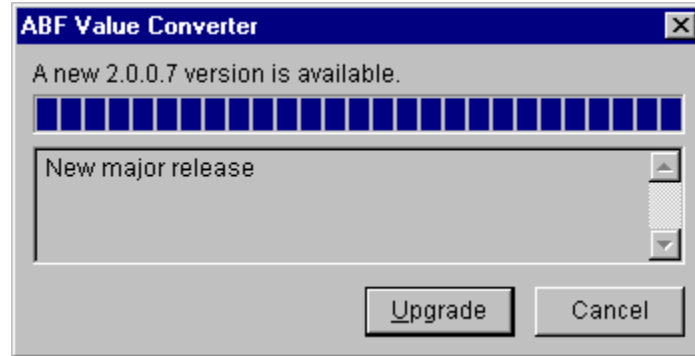


Figure 12: New version has been found.

If the new version has not been found, following message will appear:

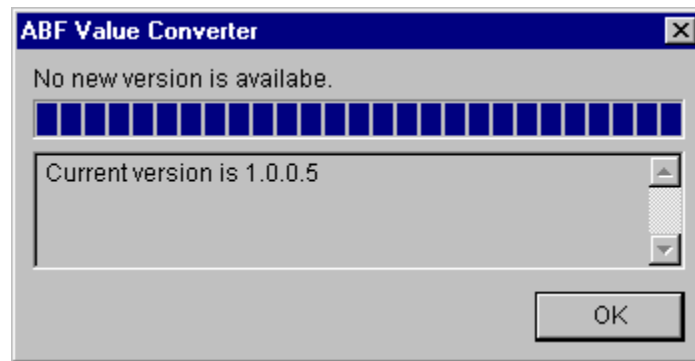


Figure 13: New version has not been found.

If there was a problem with connection to the Internet, following message will appear:

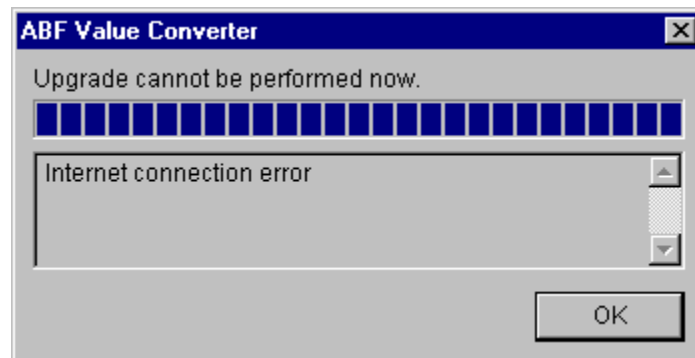


Figure 14: Problem with connect to the Internet.

Index

- A -

about 6
agreement 2

- B -

buy 4

- C -

calculation 9, 10
calculator 9
construction 10
contact 5, 6
conversion 8
conversions 8
converter 1

- E -

email 5, 6
e-mail 5, 6

- F -

function 9

- G -

geometric 10
geometry 10

- H -

how to 4, 8

- I -

input 8
install 4

interface 12

- L -

license 2

- M -

math 9
menu 6

- N -

navigate 6
new version 13

- O -

options 10, 12
output 8
overview 1

- P -

procedure 9
purchase 4

- R -

register 4

- S -

settings 10, 12
side bar 6
sidebar 6
site 5, 6

- U -

uninstall 4
update 13
upgrade 13

- V -

value 1
view style 8
view type 8

- W -

web 5, 6

Back Cover