



ABF Password Recovery

Copyright © 2000-2006 ABF software, Inc.


Table of Contents

Part I Introduction	2
1 Overview	2
2 License agreement	3
3 How to install and uninstall	5
4 How to register	5
5 Contact information	6
6 Credits	8
Part II Options	9
1 Interface options	9
2 Upgrade	10
Part III Supported programs	11
1 MS Internet Explorer	11
2 MS Outlook Express	12
3 MS Office Outlook	13
4 MS Office Access	14
5 Total Commander	15
6 FAR manager	16
Part IV Additional tools	17
1 Personal Folders	17
2 Hidden Passwords	18
3 Password Picker	19
4 Dial-up passwords	20

1 Introduction

1.1 Overview

Program overview

 **ABF Password Recovery** is a program to retrieve lost or forgotten passwords for many popular programs. Passwords can be recovered for current installation of Windows only. All passwords are recovered instantly.

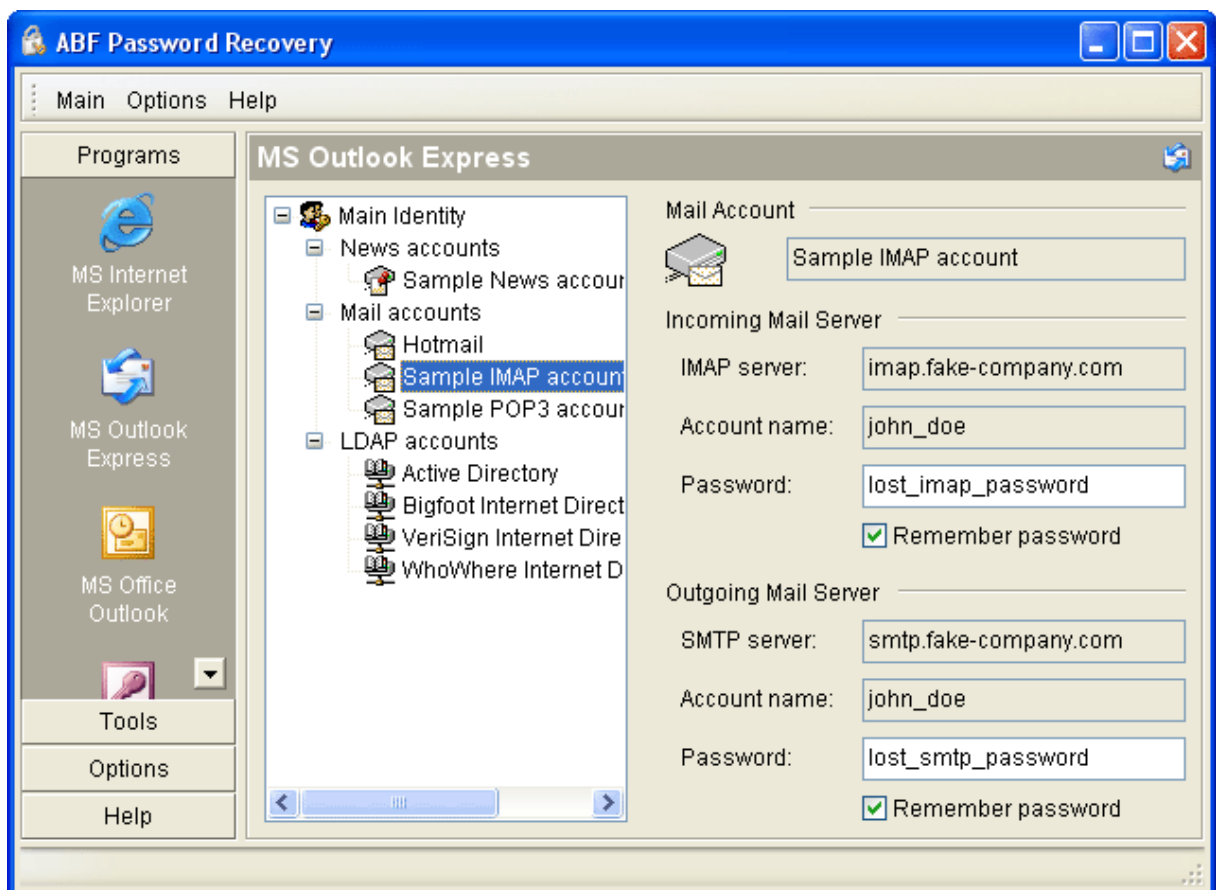


Figure 1: ABF Password Recovery.

Program interface is customized, so the users can change it, according to their preferences. The current version supports following programs:

1. **MS Internet Explorer** - passwords to HTTP protected items and FTP accounts.
2. **MS Outlook Express** - passwords to identities; mail, news, and LDAP accounts.
3. **MS Office Outlook** - passwords to Personal Folders; mail and LDAP accounts.
4. **MS Office Access** - passwords to MDB files.
5. **Total Commander** - passwords to FTP accounts.
6. **FAR manager** - passwords to FTP accounts.

The number of supported programs and features will be increased in future releases.

ABF Password Recovery is compatible with **Windows 98/Me/NT4/2000/XP/2003**. Installer and uninstaller are present. Large fonts are fully supported. The program has a huge help manual, so use **F1** key wherever you need.

1.2 License agreement

SOFTWARE LICENSE AGREEMENT

You should carefully read the following terms and conditions prior to using this software.

License Agreement

=====

This is the End User License Agreement (the "AGREEMENT") is a legal agreement between you ("LICENSEE"), the end-user, and ABF software, Inc. ("ABF"), the manufacturer and the copyright owner, for the use of the "ABF Password Recovery" software product ("SOFTWARE").

By using this Software or storing this program on a computer drive (or other media), you are agreeing to be bound by the terms of this Agreement. If you do not agree with the terms of this Agreement, please remove this Software from your system.

This Software is not Freeware. However, you may install an Evaluation Version of this Software to test and evaluate the application during the Trial Period. If the program meets your requirements, and you wish to continue using the Software, after the Trial Period has ended, you have to purchase the Registered Version. If you do not want to continue using Software after the Trial Period, please remove this Software from your system.

You accept responsibility for any network usage costs or any other costs, incurred by using this Software.

Trial Period

=====

There is a free 15-day Trial Period for this Software.

Evaluation Version

=====

The Evaluation Version allows you to test and evaluate characteristics, features, and quality of this Software. You can also test the compatibility of the Software with your hardware and your operating system. The Evaluation Version may have some restricted features or limitations. Using this Software after the Trial Period without registration violates copyright laws and may result in severe civil and criminal penalties.

Registered Version

=====

The Registered Version has no restricted features or limitations. Upon enabling the registered copy of this Software (one per each license), you can either choose to install the Software on one or more computers for your individual use, or install it on a single workstation, used consecutively by multiple users. However, you cannot do both.

Registration Key

=====

The Registration Key may come as an unlock code, password, algorithm, or a service file. The Evaluation Version becomes Registered after the Registration Key has been applied. The Registration Key can be obtained directly from ABF or from its authorized dealer or representative only. You can only use the Registration Key that you own or have permissions to use, as an employee or member of a licensed group. You must not publicize or distribute the Registration Key (or a part of it) without the permission of ABF.

Distribution

=====

The Evaluation Version of this Software may be distributed freely through on-line services, bulletin boards, or other forms of electronic media, as long as the files are distributed in their entirety. Computer Magazines/Archives are authorized to distribute the Evaluation Version on any Cover Disk or CD-ROM without an individual permission. Please inform us via e-mail (info@abf-soft.com) each time you distribute the evaluation copy.

RESTRICTIONS

=====

YOU MAY NOT ALTER THIS SOFTWARE IN ANY WAY, INCLUDING CHANGING OR REMOVING ANY MESSAGES OR WINDOWS. YOU MAY NOT DECOMPILE, REVERSE ENGINEER, DISASSEMBLE OR OTHERWISE REDUCE THIS SOFTWARE TO A HUMAN PERCEIVABLE FORM. YOU MAY NOT MODIFY, RENT OR RESELL THIS SOFTWARE FOR PROFIT, OR CREATE ANY DERIVATIVE WORKS, BASED UPON THIS SOFTWARE. PUBLICATION OR DISTRIBUTING OF THE REGISTRATION KEY OR SOME OF ITS PART IS STRICTLY PROHIBITED!

DISCLAIMER

=====

THIS SOFTWARE IS PROVIDED ON AN "AS IS" BASIS WITHOUT WARRANTY OF ANY KIND, EXPRESSED OR IMPLIED, INCLUDING BUT NOT LIMITED TO THE IMPLIED WARRANTIES OF MERCHANTABILITY AND SUITABILITY FOR A PARTICULAR PURPOSE. THE PERSON USING THE SOFTWARE BEARS ALL RISK AS TO THE QUALITY AND PERFORMANCE OF THE SOFTWARE. ABF WILL NOT BE LIABLE FOR ANY SPECIAL, INCIDENTAL, CONSEQUENTIAL, INDIRECT OR SIMILAR DAMAGES DUE TO LOSS OF DATA OR ANY OTHER REASON, EVEN IF ABF OR AN AGENT OF ABF HAS BEEN ADVISED OF THE POSSIBILITY OF SUCH DAMAGES. IN NO EVENT WILL ABF BE LIABLE FOR COSTS OF ANY DAMAGES, EXCEEDING THE PRICE PAID FOR THE SOFTWARE LICENSE, REGARDLESS OF THE FORM OF THE CLAIM. YOU ACKNOWLEDGE THAT YOU HAVE READ THIS LICENSE, UNDERSTOOD IT, AND AGREED TO BE BOUND BY ITS TERMS.

Copyright (c) 2000-2006 ABF software, Inc.
All Rights Reserved.

1.3 How to install and uninstall

How to install?

- If you have the self-extracting installation package named **abfPasswordRecoveryInstall.exe** - just run it and follow the setup instructions.
- If you have the compressed archive file named **abfPR.zip** - unpack it to the temporary folder, run the **abfPasswordRecoveryInstall.exe** file and follow the setup instructions.

How to uninstall?

1. Choose **Settings/Control Panel** from the **Start** menu.
2. Open **Add/Remove Programs** applet.
3. Select **ABF Password Recovery** item and click **Add/Remove** button.

1.4 How to register

Why the program should be registered?

ABF Password Recovery is distributed on the **Try Before You Buy** basis. The evaluation version of this software will only work for **15** days, allows retrieving only up to **3** chars of passwords, and shows a **trial reminder** ([Figure 2](#)). All limitations will be removed as soon as you register your copy of **ABF Password Recovery**.

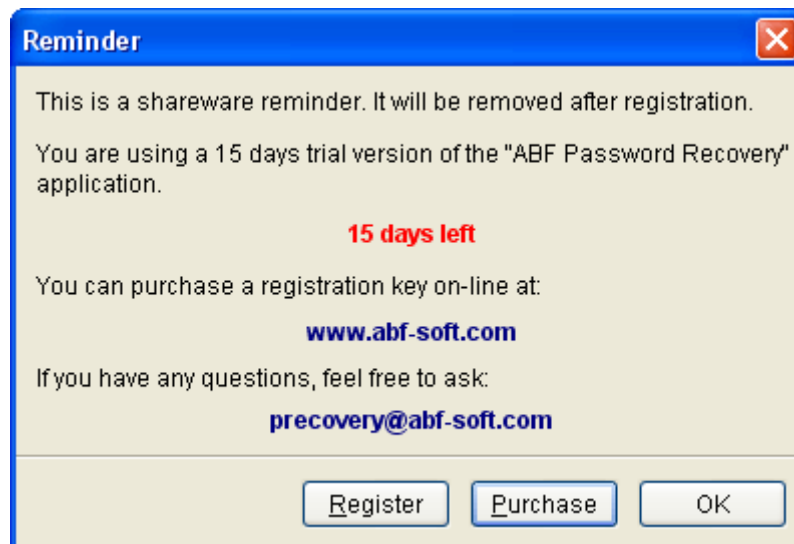


Figure 2: Trial reminder.

How to register?

At first, you should purchase the registration key. You can do it on-line via the software registration service by credit card, bank transfer or check. Please visit the registration page (www.abf-soft.com/buy.shtml) to purchase the key. It costs only **\$29.95** for the single license. There are some sale propositions for multi-licenses.

Note: The price may change.

After purchasing you will receive an e-mail with registration key and instructions. You can enter the key in two ways:

1 way: The registration e-mail has a **reg.key** file in the attachment. Run this file (simply click on the attachment icon in Outlook/Outlook Express) it will add the registration data directly into the system registry.

2 way: Click on the **Register** item in the main menu or **Register** button in the **About** dialog, key input form will appear ([Figure 3](#)).

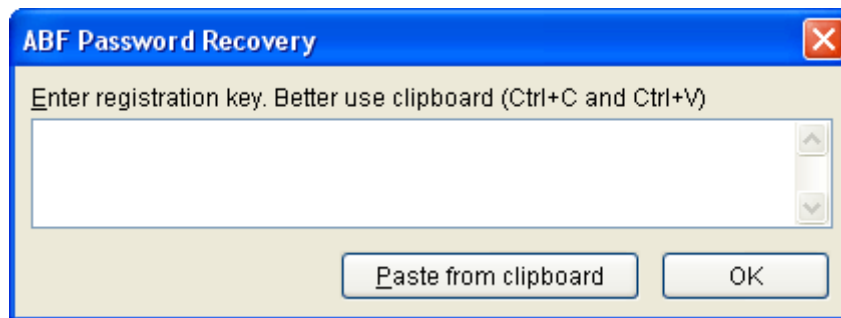


Figure 3: Registration key input form.

The registration key is a long sequence of different chars, so don't try to type it manually. Use the clipboard to copy (**Ctrl+C**) and paste (**Ctrl+V**) the key. Press **OK** button.

At last, restart the **ABF Password Recovery**. If all steps are done right, the **trial reminder** ([Figure 2](#)) will not appear anymore and the registration information will be shown in the **About** dialog ([Figure 4](#)).



Figure 4: Registration information in the About dialog.

1.5 Contact information

ABF Password Recovery is created by **ABF software, Inc.** (www.abf-software.com)

For bug reports, comments, suggestions or complaints, please send e-mail to:

precovery@abf-soft.com

To download the latest release of the program, please visit the web page:

www.abf-soft.com/password-recovery.shtml

If you or your company need some custom software development, such as: program, screen saver, presentation, CD shell, or web site, please contact us:

support@abf-software.com

Or visit our corporative web site:

www.abf-software.com

We can develop any kind of software or web site you want.

1.6 Credits

ABF Password Recovery is created by **ABF software, Inc.** (www.abf-software.com)

Project leader

Dmitry Golovenko

Programming

ABF Software Team

Marketing

ABF Software Team

Help and manual

ABF Software Team

2 Options

2.1 Interface options

ABF Password Recovery has very flexible user interface. Some of interface settings can be changed by user in the **Interface Options** section. To open this section click an icon in the **Options** group of the SideBar or an according menu item.

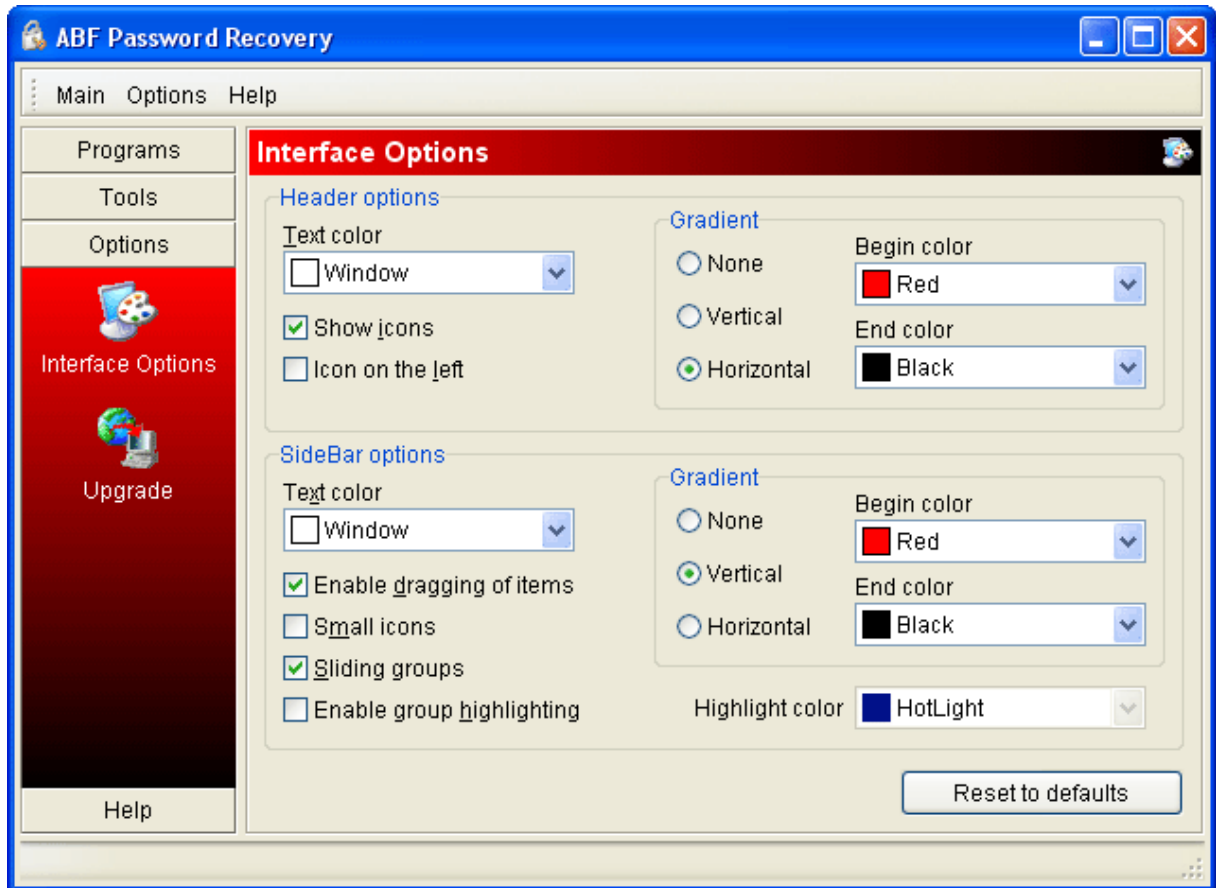


Figure 5: Interface options.

A **Header** options determines appearance of the program section header. A **SideBar** options determines appearance and functionality of the sidebar. Use the **Reset to defaults** button to reset all **Interface options** to values by default.

2.2 Upgrade

ABF Password Recovery can upgrade itself from the web. In order to obtain an upgrade, you should be connected to the Internet. The application will check whether the new version is available:

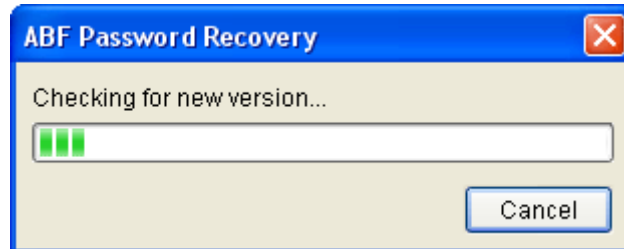


Figure 6: Checking for new version.

If the new version has been found, press appeared **Upgrade** button to complete the process.

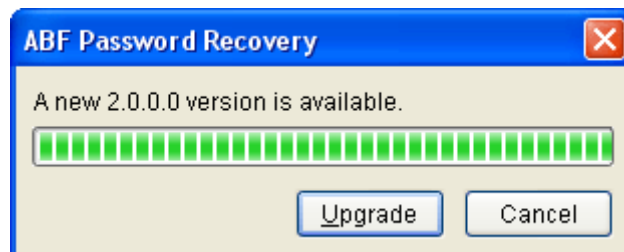


Figure 7: New version has been found.

If the new version has not been found, following message will appear:

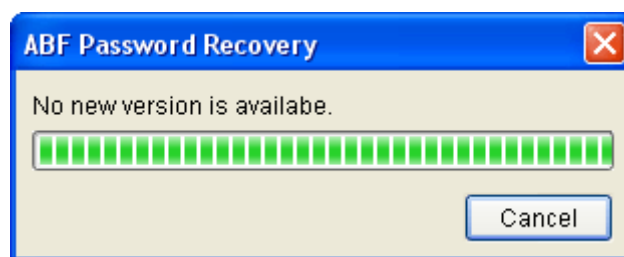


Figure 8: New version has not been found.

If there was a problem with connection to the Internet, following message will appear:

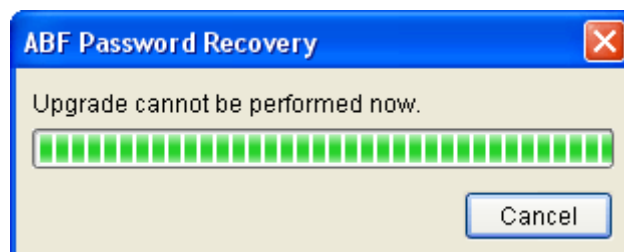


Figure 9: Problem with connect to the Internet.

3 Supported programs

3.1 MS Internet Explorer

ABF Password Recovery supports **MS Internet Explorer** ver 5.0 and higher. You can easily retrieve saved passwords to HTTP protected items and to FTP accounts.

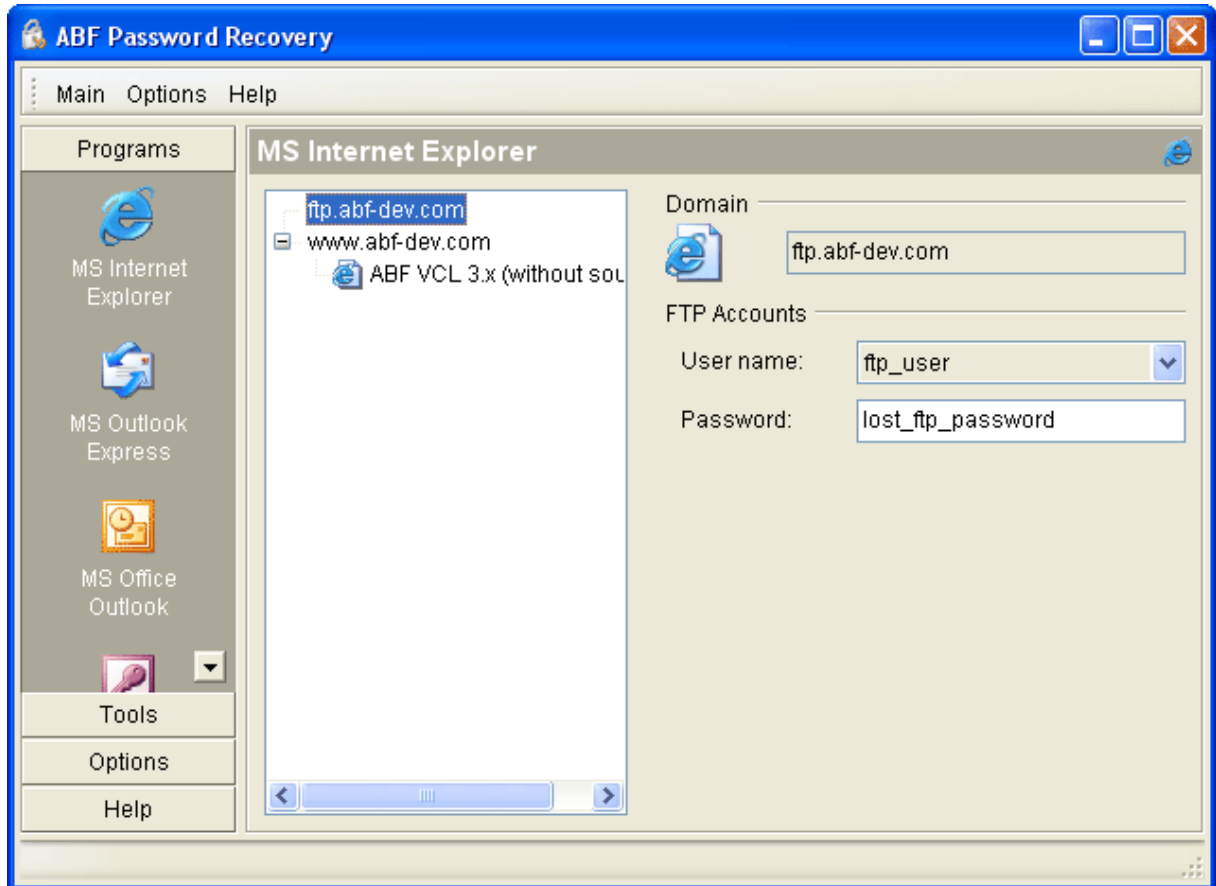


Figure 10: MS Internet Explorer password recovery.

Press **MS Internet Explorer** item in the SideBar or main menu. Select a domain name or a protected item you need. After that all passwords will be retrieved instantly. You can write them out or even change to new ones.

Note: The trial version allows reading up to **3** chars of passwords only.

3.2 MS Outlook Express

ABF Password Recovery supports **MS Outlook Express** ver 4.0 and higher. You can easily retrieve passwords to identities; mail, news and LDAP accounts.

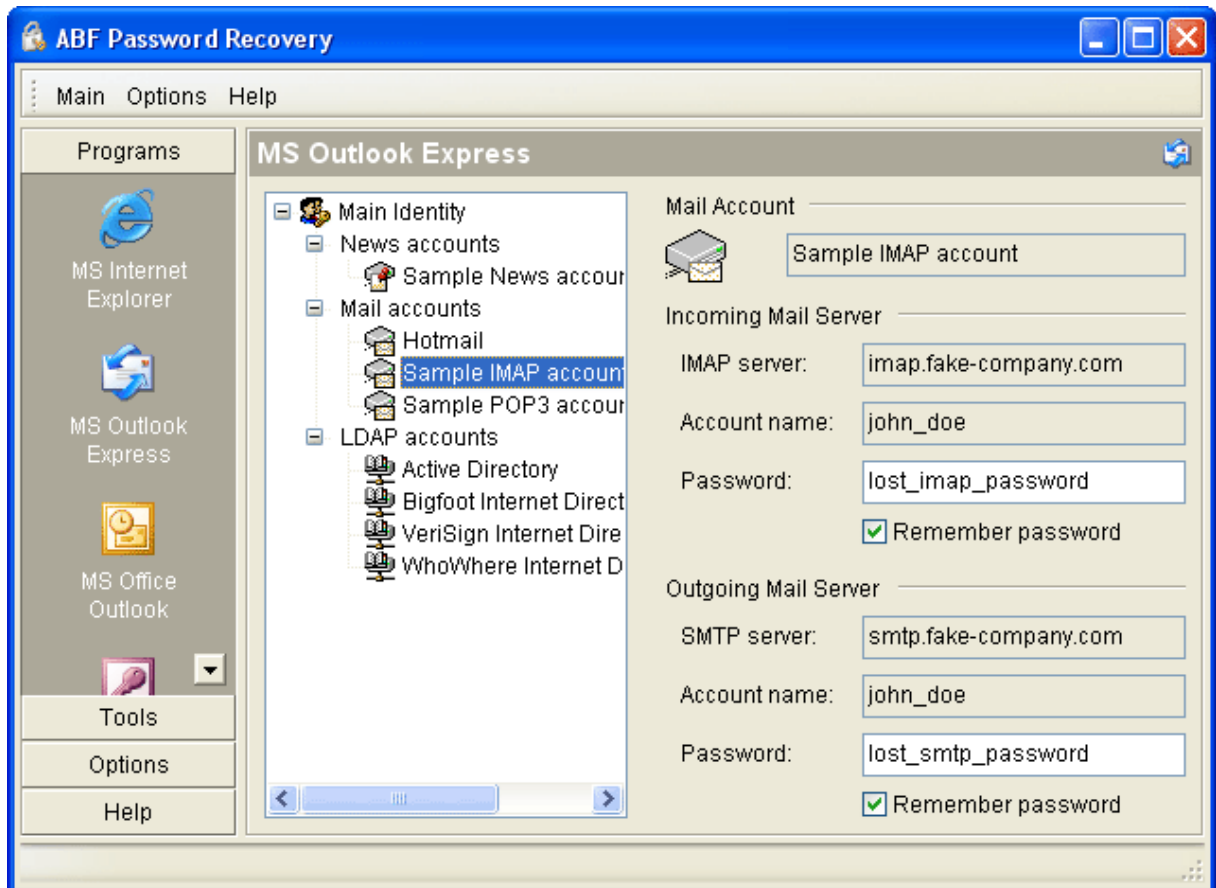


Figure 11: MS Outlook Express password recovery.

Press **MS Outlook Express** item in the SideBar or main menu. Select identity or account you need. After that all passwords will be retrieved instantly. You can write them out or even change to new ones.

Note: The trial version allows reading up to **3** chars of passwords only.

3.3 MS Office Outlook

ABF Password Recovery supports **MS Office Outlook 2000/XP/2003**. You can easily retrieve passwords to Personal Folders, mail and LDAP accounts.

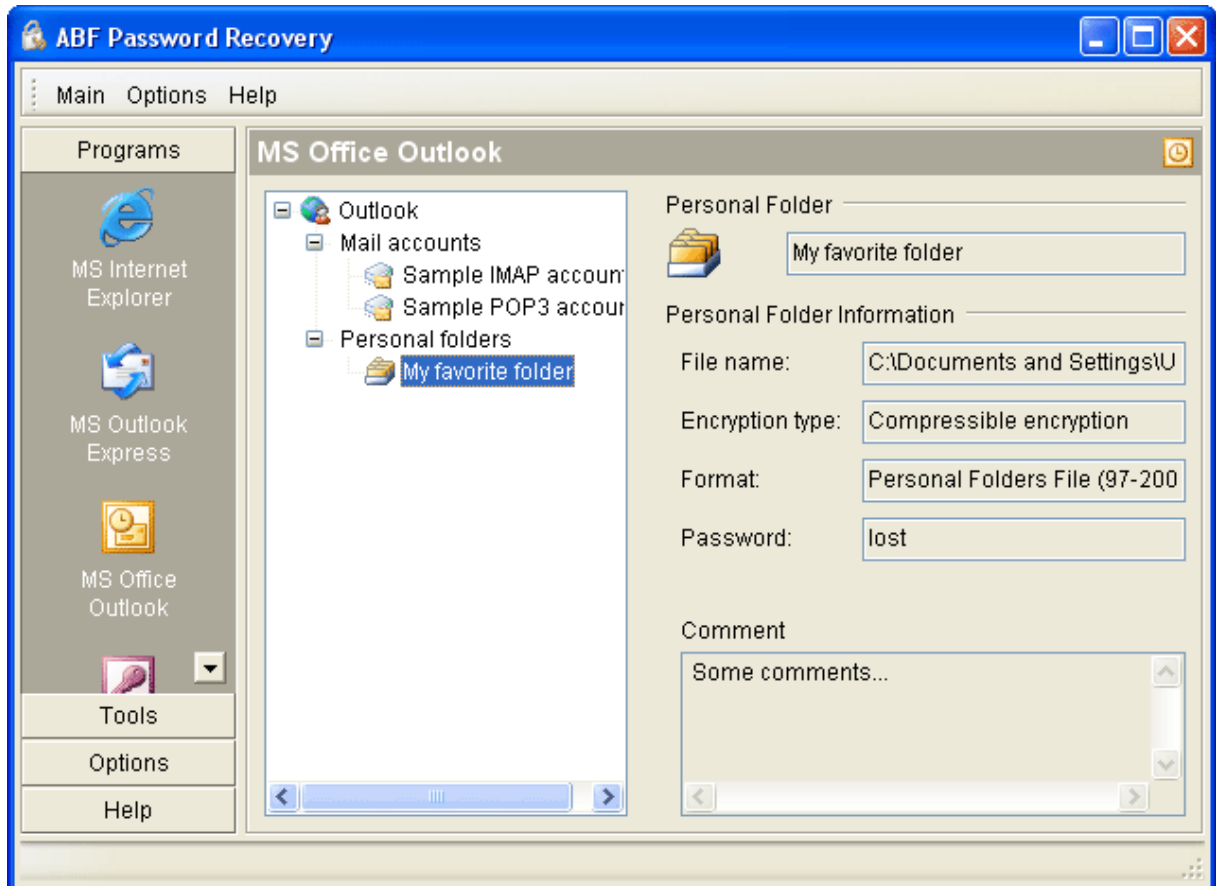


Figure 12: MS Office Outlook password recovery.

Press **MS Office Outlook** item in the SideBar or main menu. Select profile and account you need. After that all passwords will be retrieved instantly. You can write them out or even change to new ones.

Note: The trial version allows reading up to **3** chars of passwords only.

3.4 MS Office Access

ABF Password Recovery supports **MS Office Access 97/2000/XP/2003**. You can easily retrieve passwords to MDB files.

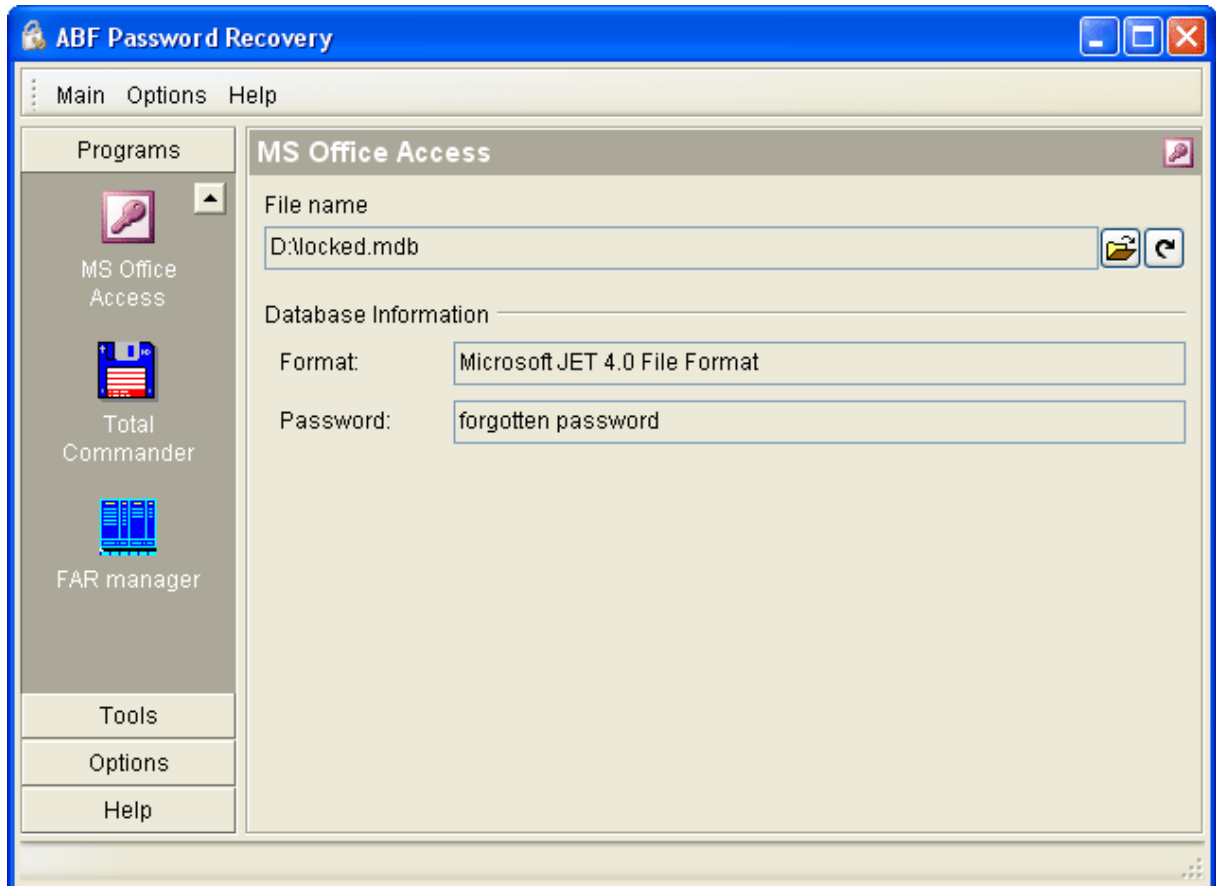


Figure 13: MS Office Access password recovery.

Press **MS Office Access** item in the SideBar or main menu. Select the MDB file you need. After that the password will be retrieved instantly.

Note: The trial version allows reading up to **3** chars of passwords only.

3.5 Total Commander

ABF Password Recovery supports all 32-bit versions of **Total Commander** (former "Windows Commander"). You can easily retrieve passwords to FTP accounts.

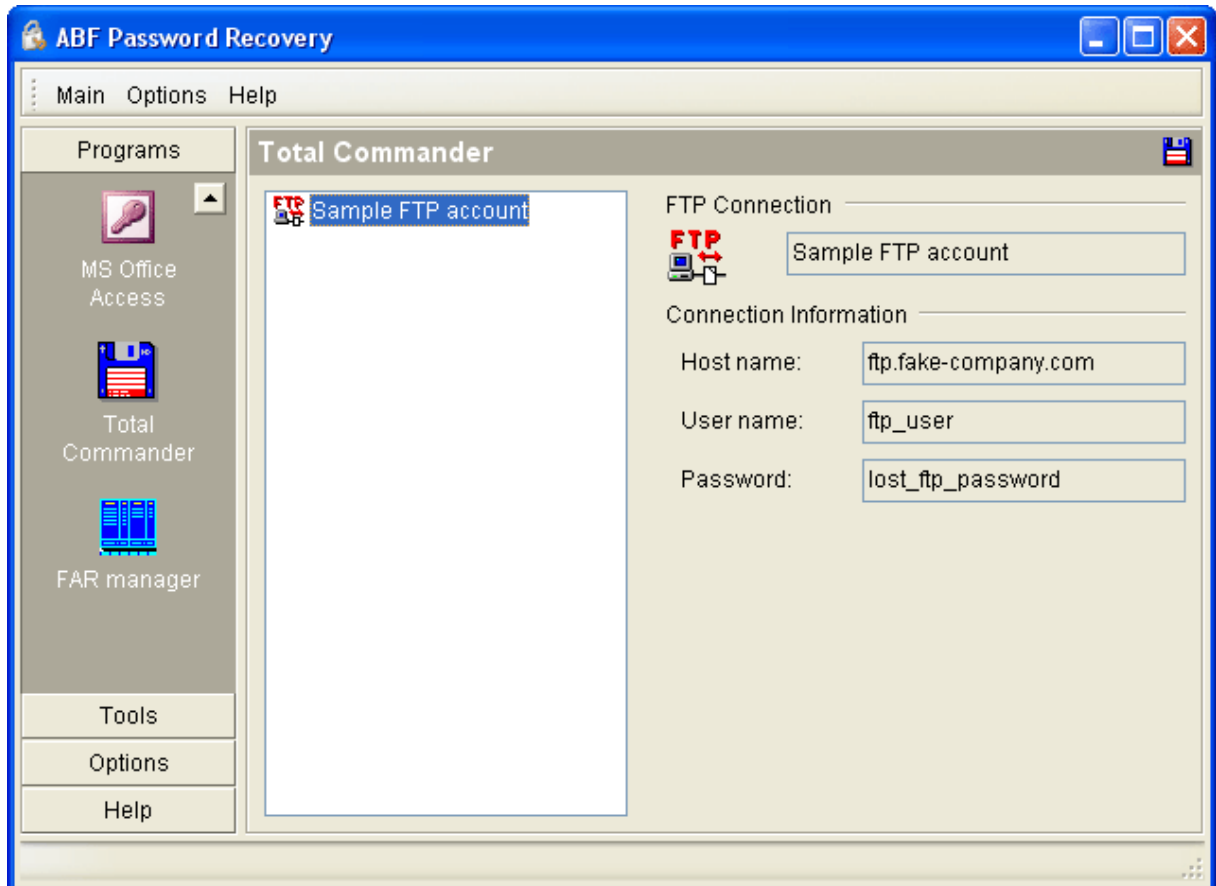


Figure 14: Total Commander password recovery.

Press **Total Commander** item in the SideBar or main menu. Select account you need. After that a password will be retrieved instantly.

Note: The trial version allows reading up to **3** chars of passwords only.

3.6 FAR manager

ABF Password Recovery supports all versions of **FAR manager**. You can easily retrieve passwords to FTP accounts.

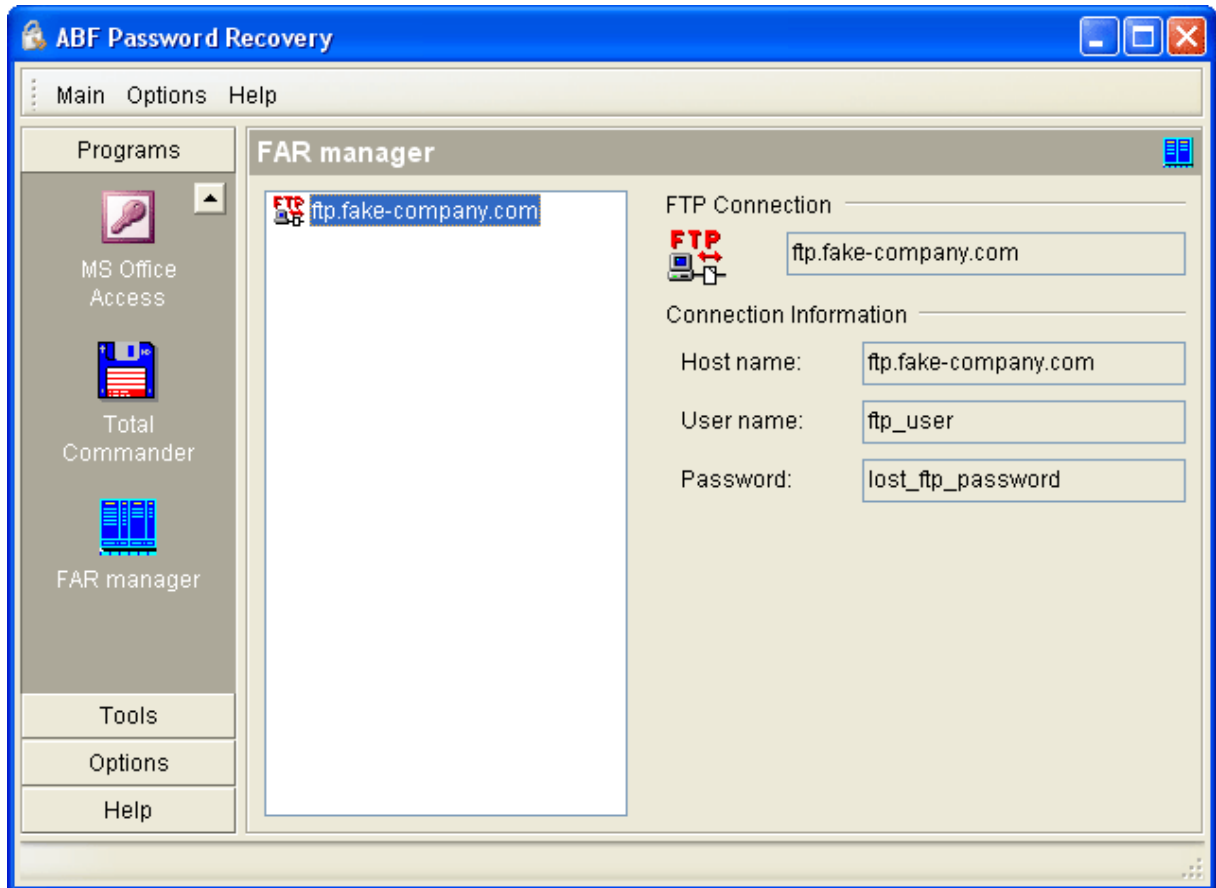


Figure 15: FAR manager password recovery.

Press **FAR manager** item in the SideBar or main menu. Select account you need. After that a password will be retrieved instantly.

Note: The trial version allows reading up to **3** chars of passwords only.

4 Additional tools

4.1 Personal Folders

ABF Password Recovery supports **.pst** files of **Outlook 97/2000/XP/2003**. You can easily retrieve passwords to Personal Folders .

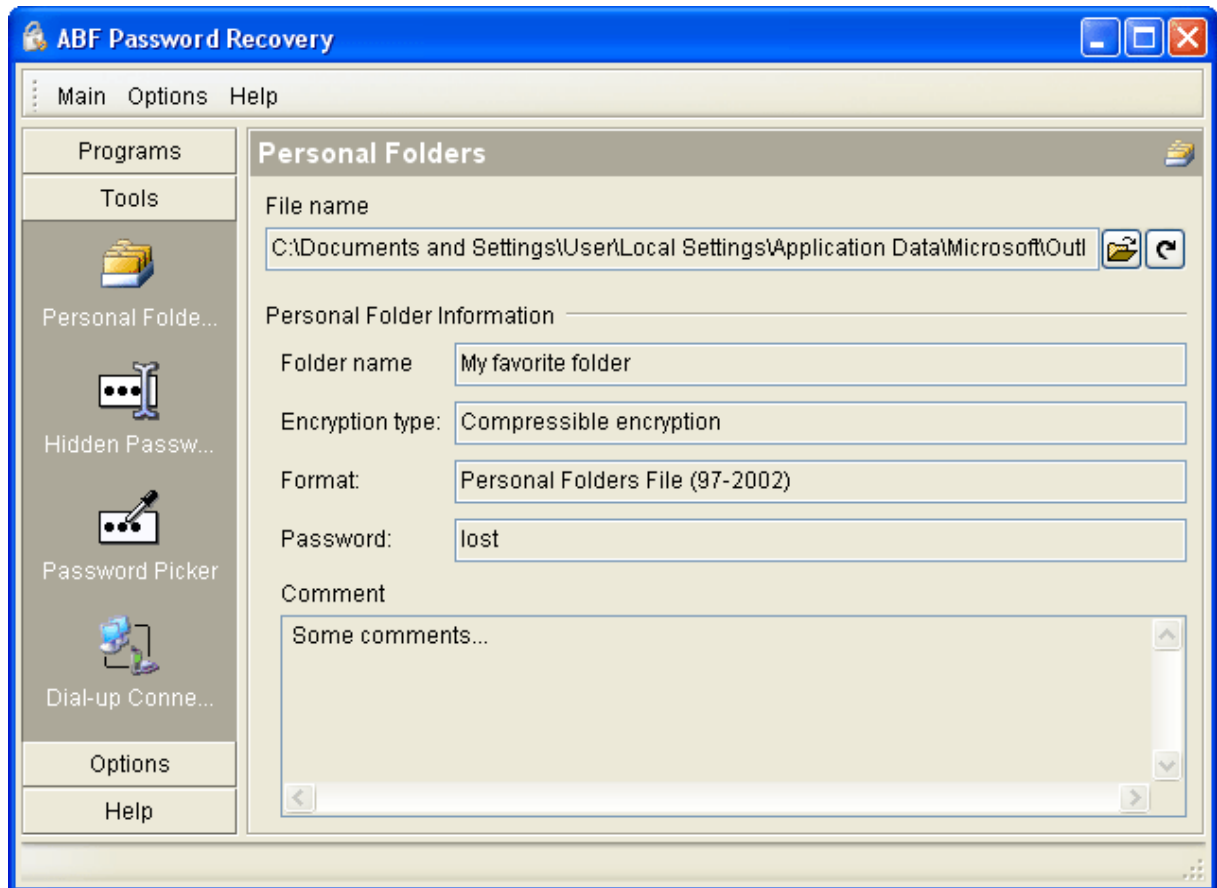


Figure 16: Personal Folders.

Press **Personal Folders** item in the SideBar or main menu. Select the Personal Folders file you need. After that the password will be retrieved instantly.

Note: The trial version allows reading up to **3** chars of passwords only.

4.2 Hidden Passwords

ABF Password Recovery allows you to collect passwords from any programs that have editors with asterisks. You can easily retrieve these passwords using our program.

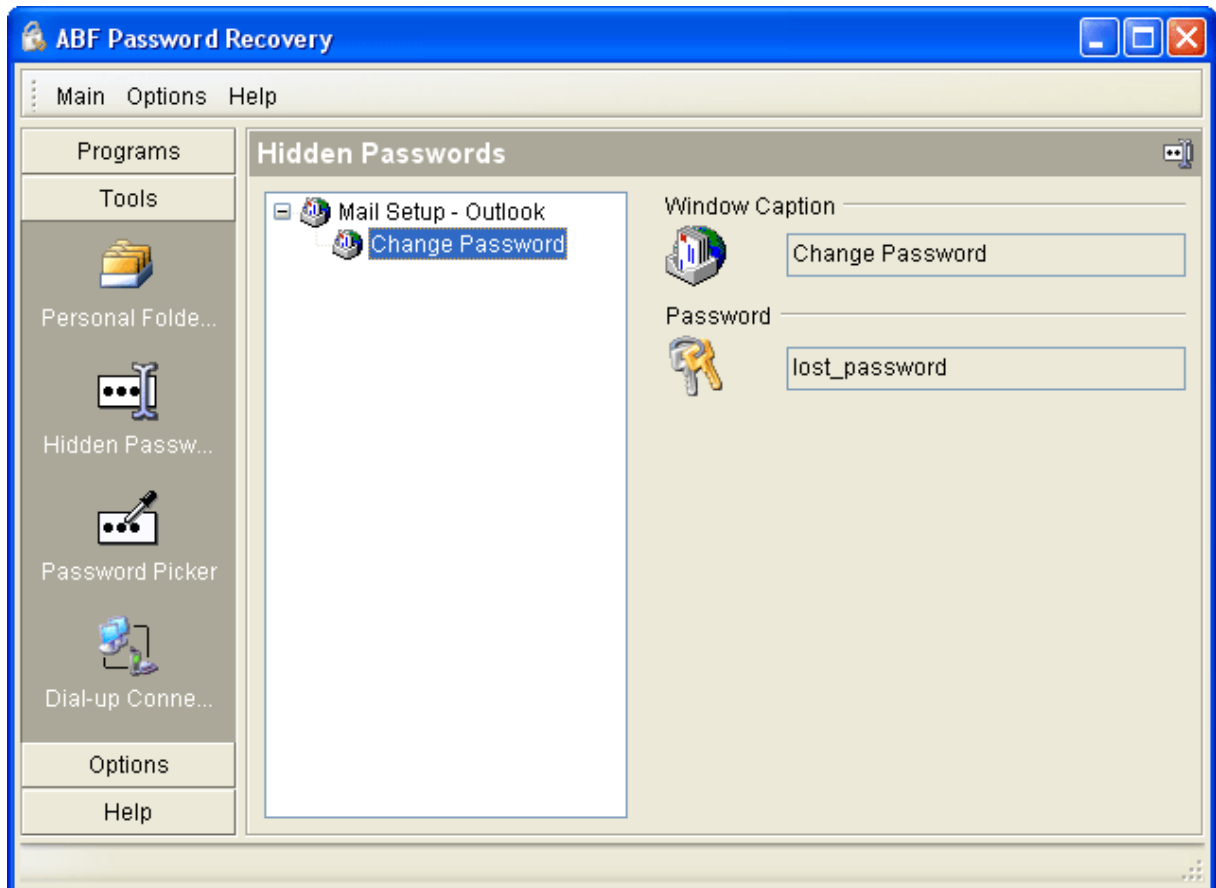


Figure 17: Hidden passwords.

Press **Hidden Passwords** item in the SideBar or main menu. Select a window and editor you need. After that the password will be retrieved instantly.

Note: The trial version allows reading up to **3** chars of passwords only.

4.3 Password Picker

ABF Password Recovery allows you to collect passwords from any programs that have editors with asterisks. You can easily pick these passwords using our program.

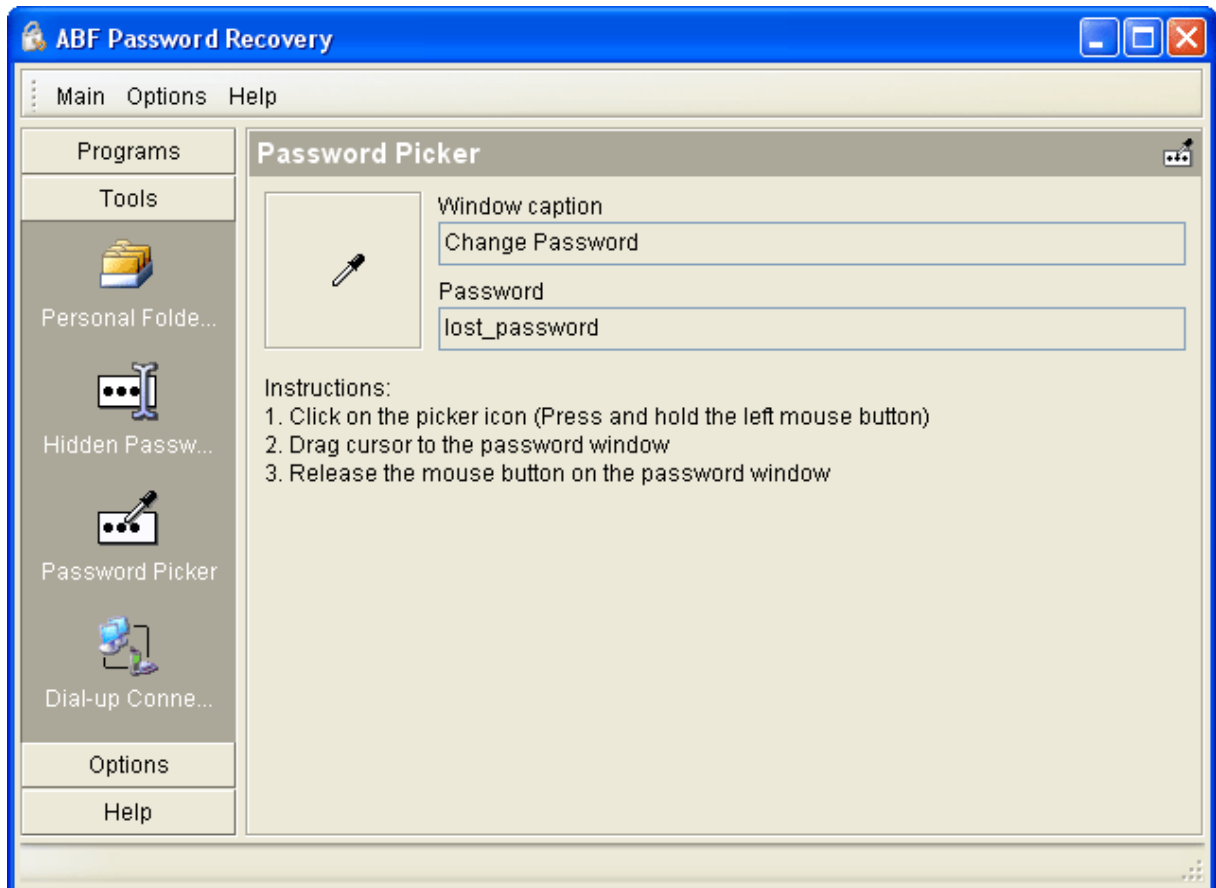


Figure 18: Password Picker.

Press **Password Picker** item in the SideBar or main menu. Use a picker to select the editor with asterisks. When you release the mouse button the password will be retrieved instantly.

Note: The trial version allows reading up to **3** chars of passwords only.

4.4 Dial-up passwords

ABF Password Recovery allows you to collect passwords from the Windows dial-up connections. You can easily retrieve these passwords using our program.

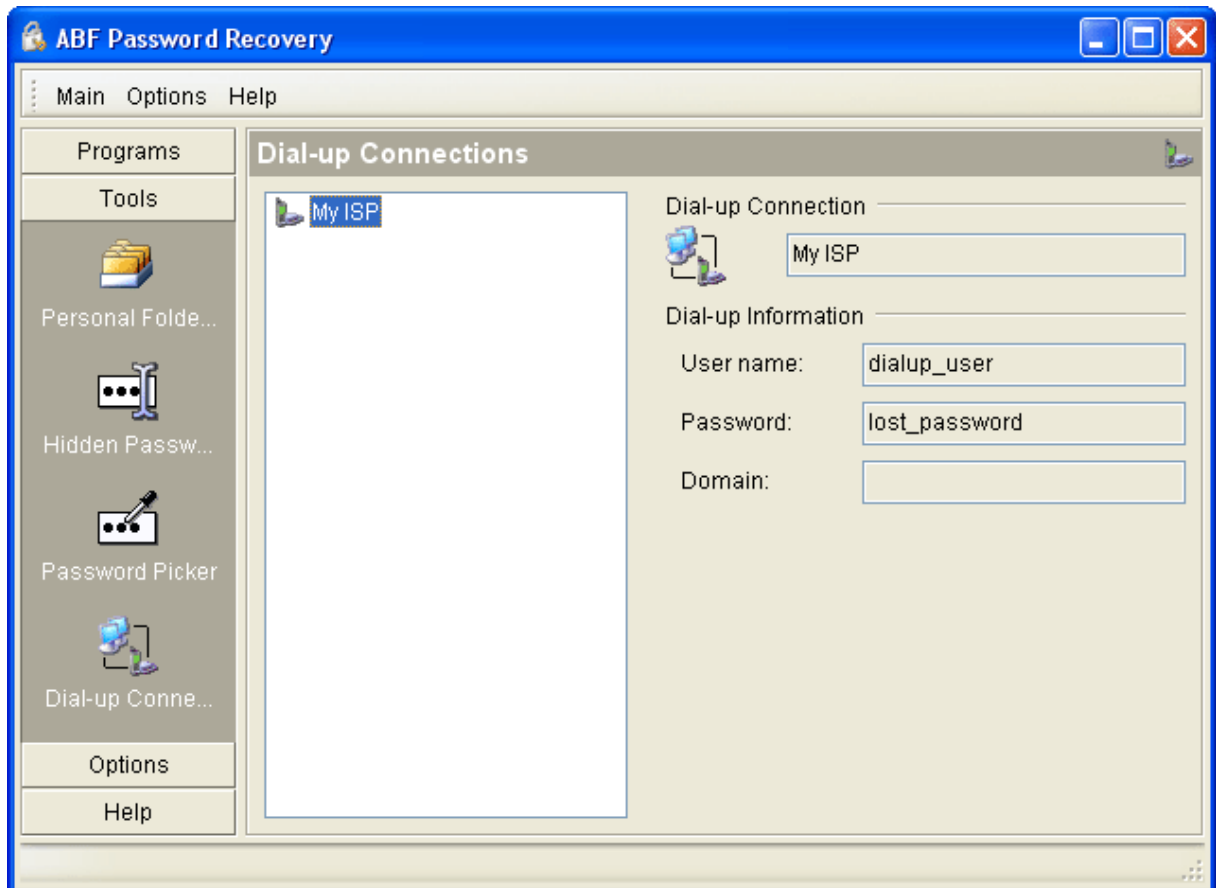


Figure 19: Dial-up Passwords.

Press **Dial-up Passwords** item in the SideBar or main menu. Select a dial-up account you need. After that the password will be retrieved instantly.

Note: The trial version allows reading up to **3** chars of passwords only.

