



ABF Magnifying Tools

Copyright © 2000-2003 ABF software, Inc.

Table of Contents

Part I Introduction	2
1 Overview	2
2 License agreement	3
3 How to install and uninstall	5
4 How to register	5
5 Contact information	8
6 Credits	9
Part II Content	10
1 Launcher	10
2 Cursor Eye	11
3 Lens	13
4 Magnifier	15
5 Upgrade	16

1 Introduction

1.1 Overview

Program overview



ABF Magnifying Tools is a set of useful graphics tools for viewing the screen area in different zooms. Each tool has its own unique behavior and usability. All tools supplement each other and allow designers and people with poor eyesight to work with computers better. The set contains:

- **Cursor Eye** - a following cursor tool that moves near the mouse cursor and magnifies the screen area around it.
- **Lens** - a skinnable graphic tool for viewing the screen area in different zooms.
- **Magnifier** - a magnifying panel that shows the area around cursor in different zooms.

Set of different tools covers any preferences of various users. **ABF Magnifying Tools** contains all needful magnifying utilities in one package.

How to use

ABF Magnifying Tools has a **Launcher** host program ([Figure 1](#)) that allows you to run and stop any magnifying tools.

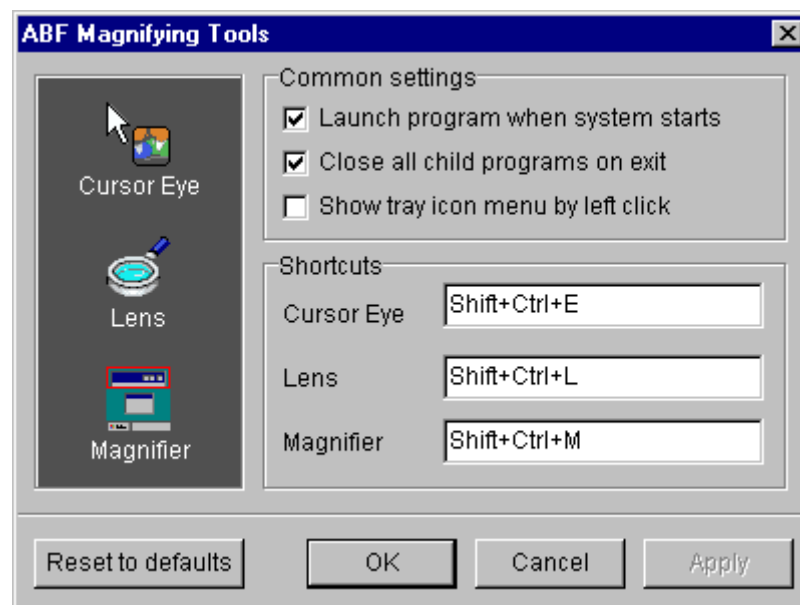


Figure 1: ABF Magnifying Tools host program.

ABF Magnifying Tools have icons in the system notification area ([Figure 2](#)). You can use popup menus of tray icons and keyboard shortcuts to manipulate any magnifying utility.



Figure 2: Icons in the system notification area (Magnifier, Lens, Eye, and Launcher).

Read [Cursor Eye](#), [Lens](#), and [Magnifier](#) topics to get information about each magnifying tool.

Requirements

- Windows 98/Me/2000/XP/2003.

Copyright© 2000-2003 **ABF software, Inc.**All rights reserved.

Created with the **Help&Manual** authoring tool by **EC Software** (www.ec-software.com)

1.2 License agreement

SOFTWARE LICENSE AGREEMENT

You should carefully read the following terms and conditions prior to using this software.

License Agreement

=====

This is the End User License Agreement (the "AGREEMENT") is a legal agreement between you ("LICENSEE"), the end-user, and ABF software, Inc. ("ABF"), the manufacturer and the copyright owner, for the use of the "ABF Magnifying Tools" software product ("SOFTWARE").

By using this Software or storing this program on a computer drive (or other media), you are agreeing to be bound by the terms of this Agreement. If you do not agree with the terms of this Agreement, please remove this Software from your system.

This Software is not Freeware. However, you may install an Evaluation Version of this Software to test and evaluate the application during the Trial Period. If the program meets your requirements, and you wish to continue using the Software, after the Trial Period has ended, you have to purchase the Registered Version. If you do not want to continue using Software after the Trial Period, please remove this Software from your system.

You accept responsibility for any network usage costs or any other costs, incurred by using this Software.

Trial Period

=====

There is a free 30-day Trial Period for this Software.

Evaluation Version

=====

The Evaluation Version allows you to test and evaluate characteristics, features, and quality of this Software. You can also test the compatibility of the Software with your hardware and your operating system. The Evaluation Version may have some restricted features or limitations. Using this Software after the Trial Period without registration violates copyright laws and may result in severe civil and criminal penalties.

Registered Version

=====

The Registered Version has no restricted features or limitations. Upon enabling the registered copy of this Software (one per each license), you can either choose to install the Software on one or more computers for your individual use, or install it on a single workstation, used consecutively by multiple users. However, you cannot do both.

Registration Key

=====

The Registration Key may come as an unlock code, password, algorithm, or a service file. The Evaluation Version becomes Registered after the Registration Key has been applied. The Registration Key can be obtained directly from ABF or from its authorized dealer or representative only. You can only use the Registration Key that you own or have permissions to use, as an employee or member of a licensed group. You must not publicize or distribute the Registration Key (or a part of it) without the permission of ABF.

Distribution

=====

The Evaluation Version of this Software may be distributed freely through on-line services, bulletin boards, or other forms of electronic media, as long as the files are distributed in their entirety. Computer Magazines/Archives are authorized to distribute the Evaluation Version on any Cover Disk or CD-ROM without an individual permission. Please inform us via e-mail (info@abf-soft.com) each time you distribute the evaluation copy.

RESTRICTIONS

=====

YOU MAY NOT ALTER THIS SOFTWARE IN ANY WAY, INCLUDING CHANGING OR REMOVING ANY MESSAGES OR WINDOWS. YOU MAY NOT DECOMPILE, REVERSE ENGINEER, DISASSEMBLE OR OTHERWISE REDUCE THIS SOFTWARE TO A HUMAN PERCEIVABLE FORM. YOU MAY NOT MODIFY, RENT OR RESELL THIS SOFTWARE FOR PROFIT, OR CREATE ANY DERIVATIVE WORKS, BASED UPON THIS SOFTWARE. PUBLICATION OR DISTRIBUTING OF THE REGISTRATION KEY OR SOME OF ITS PART IS STRICTLY PROHIBITED!

DISCLAIMER

=====

THIS SOFTWARE IS PROVIDED ON AN "AS IS" BASIS WITHOUT WARRANTY OF ANY KIND, EXPRESSED OR IMPLIED, INCLUDING BUT NOT LIMITED TO THE IMPLIED WARRANTIES OF MERCHANTABILITY AND SUITABILITY FOR A PARTICULAR PURPOSE. THE PERSON USING THE SOFTWARE BEARS ALL RISK AS TO THE QUALITY AND PERFORMANCE OF THE SOFTWARE. ABF WILL NOT BE LIABLE FOR ANY SPECIAL, INCIDENTAL, CONSEQUENTIAL, INDIRECT OR SIMILAR DAMAGES DUE TO LOSS OF DATA OR ANY OTHER REASON, EVEN IF ABF OR AN AGENT OF ABF HAS BEEN ADVISED OF THE POSSIBILITY OF SUCH DAMAGES.

IN NO EVENT WILL ABF BE LIABLE FOR COSTS OF ANY DAMAGES, EXCEEDING THE PRICE PAID FOR THE SOFTWARE LICENSE, REGARDLESS OF THE FORM OF THE CLAIM. YOU ACKNOWLEDGE THAT YOU HAVE READ THIS LICENSE, UNDERSTOOD IT, AND AGREED TO BE BOUND BY ITS TERMS.

Copyright (c) 2000-2003 ABF software, Inc.
All Rights Reserved.

1.3 How to install and uninstall

How to install

- If you have got the self-extracting installation package named **abfMagnifyingTools Install.exe** - just run it and follow the setup instructions.
- If you have got the compressed archive file named like **abfMT.zip** - unpack it to the temporary folder, run the **abfMagnifyingTools Install.exe** file and follow the setup instructions.

How to uninstall

We really hope, you will never do it :)

1. Choose **Settings/Control Panel** from the **Start** menu.
2. Open **Add/Remove Programs** applet.
3. Select **ABF Outlook Express Backup** item and click **Add/Remove** button.

1.4 How to register

Why the program should be registered?

ABF Magnifying Tools is distributed on a **Try Before You Buy** (shareware) basis. The evaluation (trial) version will only work for **30** days after the first install, and will show a **trial reminder** ([Figure 3](#)) on the program startup. If you like this program and decide to keep it, you will need to purchase a registration key. All limitations will be removed as soon as you register your copy of **ABF Magnifying Tools**.

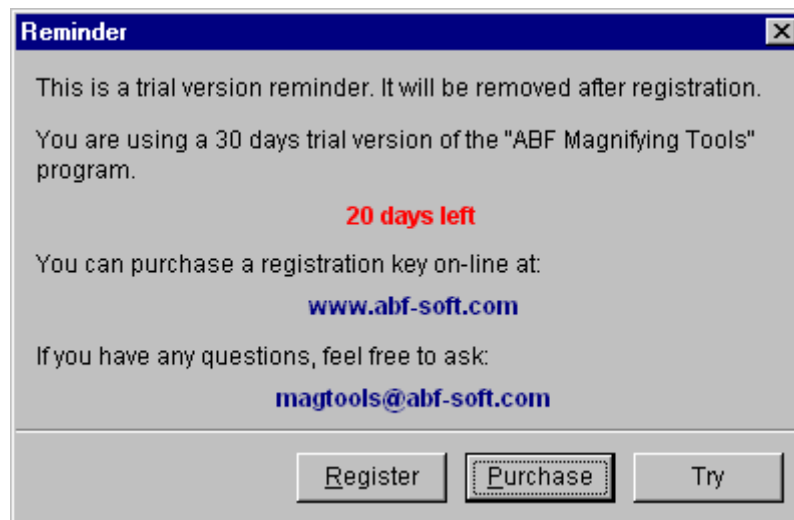


Figure 3: Trial reminder.

How to register?

At first, you should obtain a registration key. You can purchase it on-line either by credit card, bank transfer or check. Ordering by Phone, FAX, and postal mail is also available. Please visit the registration page (www.abf-soft.com/buy.shtml) and purchase the program. It costs only **\$14.95** for the single license. There are some sale propositions for multi-licenses and bundles with other our software products.

Note: The price can be changed in future.

After purchasing you will receive an e-mail with registration key and instructions. You can enter the key in two ways:

1 way: The registration e-mail has a **reg.key** file in the attachment. Run this file (simply click on the attachment icon in Outlook/Outlook Express) it will add the registration data directly into the system registry.

2 way: Click on the **Register** menu item or **Register** button in the **About** dialog. A key input form will appear ([Figure 4](#)).

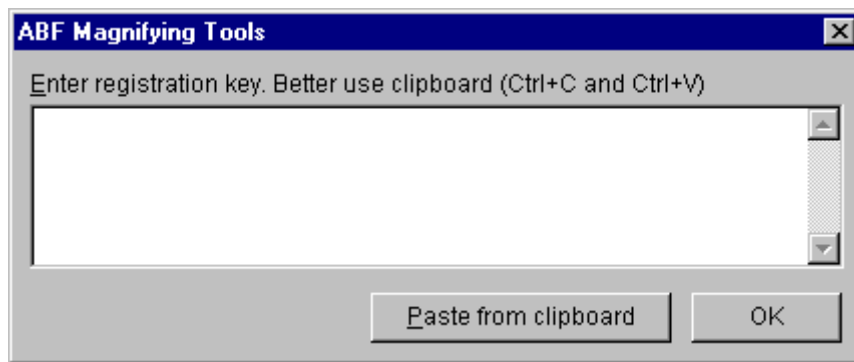


Figure 4: Registration key input form .

The registration key is a long sequence of different chars, so don't try to type it manually. Use the clipboard to copy (**Ctrl+C**) and paste (**Ctrl+V**) the key. Press **OK** button.

At last, restart the **ABF Magnifying Tools**. If all steps are done right, the **trial reminder** ([Figure 3](#)) will not appear anymore and the registration information will be shown in the **About** dialog ([Figure 5](#)).



Figure 5: Registration information in the About dialog.

1.5 Contact information

To download the latest release of **ABF Magnifying Tools**, please visit the web address:

www.abf-soft.com/magnifying-tools.shtml

For bug reports, comments, suggestions or complaints, please send e-mail to:

magnifying-tools@abf-soft.com

The **ABF Magnifying Tools** is created by **ABF software, Inc.**

E-mail: info@abf-software.com

Web: www.abf-software.com

If you or your company need some custom software development, such as: program, screen savers, presentation, CD shell, or web site. Please contact us:

support@abf-software.com

Or visit our corporative web site:

www.abf-software.com

We can develop any kind of software or web site you want.

1.6 Credits

The **ABF Magnifying Tools** is created by **ABF software, Inc.** (www.abf-software.com)

Project leader
KARPOLAN

Programming
Tanya Vlaskina
KARPOLAN

Marketing
Oksana Karpenko

Help and manual
ABF software Team

Special thanks to
Borland - for great software developing tools, especially for Delphi (www.borland.com).
Microsoft - for popular Windows operating system (www.microsoft.com).
All beta testers - for testing, new ideas and bug reporting.
All registered users - for buying, new ideas and inspiration of us.
And you - for reading this.

2 Content

2.1 Launcher

Launcher is a host program of **ABF Magnifying Tools**. The options window ([Figure 6](#)) allows you to run any of included utility, set common settings, and specify keyboard shortcuts for each magnifying tool.

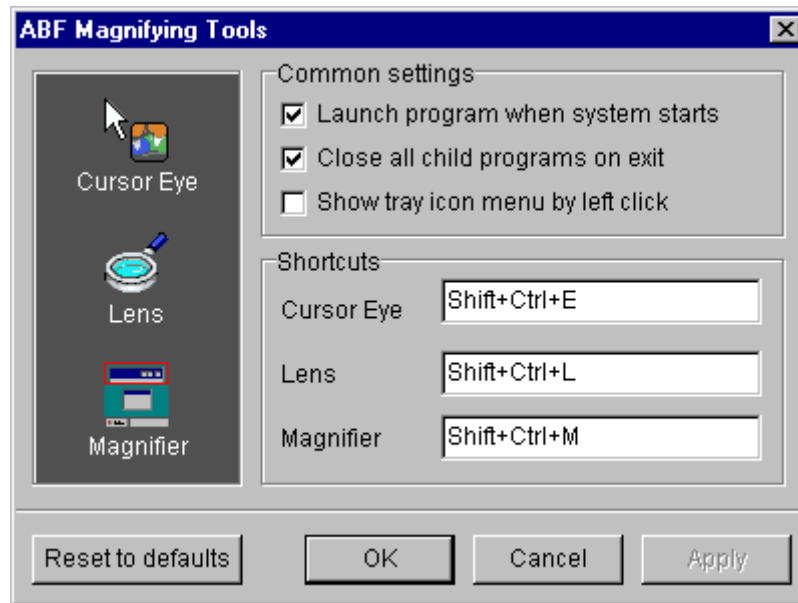


Figure 6: ABF Magnifying Tools host program.

Launcher has a tray icon (looks like a blue eye) in the system notification area ([Figure 2](#)). Almost all the time **Launcher** is minimized to tray (near the clock). You can run or close any magnifying tool using a popup menu of the tray icon ([Figure 7](#)). Also you can use keyboard shortcuts to manipulate magnifying utilities.

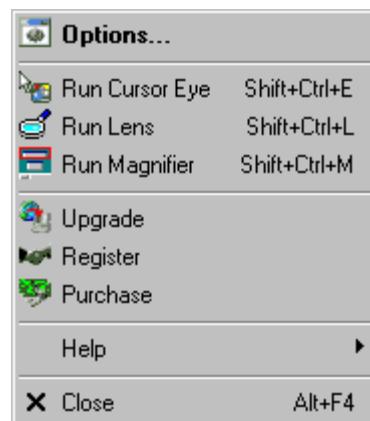


Figure 7: Tray popup menu of the host program.

2.2 Cursor Eye

Cursor Eye is a following cursor tool. It means that some window moves near the mouse cursor ([Figure 8](#)) and magnifies the screen area around it.

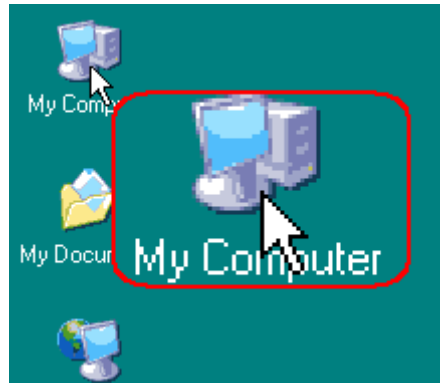


Figure 8: Cursor Eye tool.

Cursor Eye is very useful for designers who need to control the appearance of different parts of programs, web sites, graphs or presentations. Also it is useful for people with poor eyesight who have a problem to see some small objects on the screen.

Cursor Eye has a tray icon in the system notification area ([Figure 2](#)). You can use a popup menu of icon ([Figure 9](#)) to manage the program.

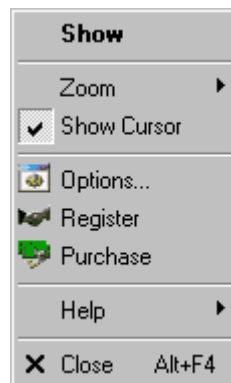


Figure 9: Tray popup menu of Cursor Eye.

Cursor Eye is highly customizable using the **Options** dialog ([Figure 10](#)). You can change appearance, coordinates, zoom, and refresh rate of the eye window.

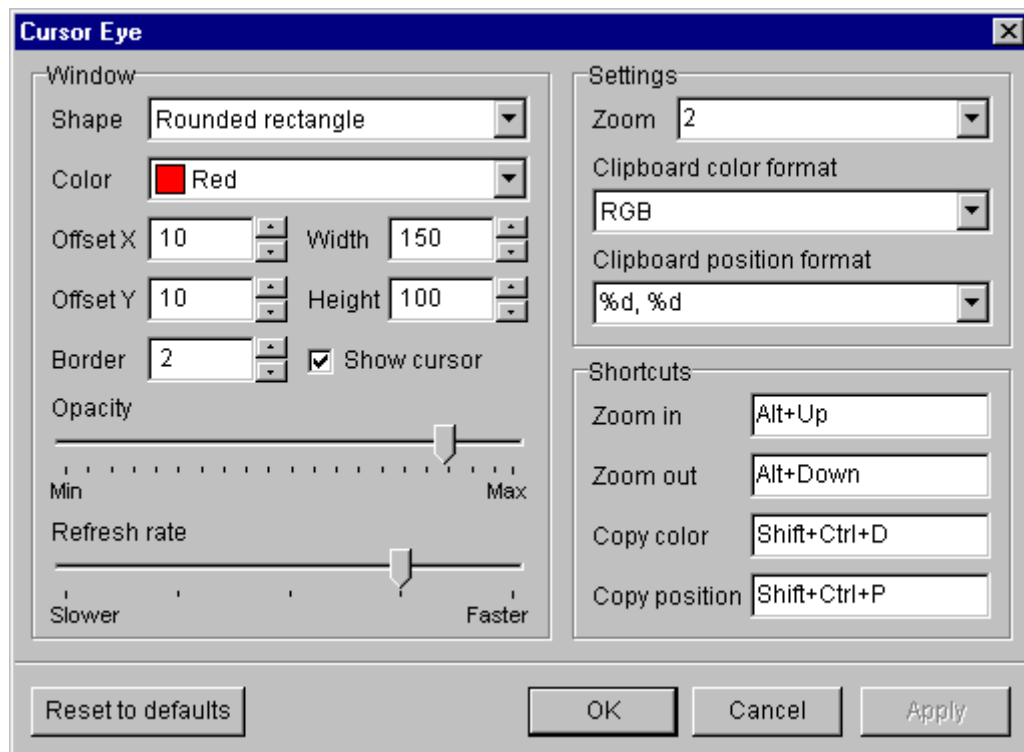


Figure 10: Options of Cursor Eye tool.

Cursor Eye can be semitransparent (in Win2k and higher). It makes the program more comfortable, because you can see a content of screen through the eye window. You can specify the shape of window, width of border, and turn on/off the cursor image.

Cursor Eye allows designers to pick a color value of pixel under the cursor using a predefined keyboard shortcut. Picking of the cursor position is also possible. Such feature makes the **Cursor Eye** a perfect color picker tool.

2.3 Lens

Lens is a skinnable graphic tool for viewing the screen area in different zooms (magnify from 1x to 64x). This program was designed as a demo of the krpRegions library (the library for creating cool looking user interfaces), however, many people with poor eyesight have found a freeware version of this program very helpful. **Lens** has a skinnable interface ([Figure 11](#)), so you can modify the program's appearance for your convenience. You can also easily create your own "skins" for this program, using any graphic editor. Here are some examples of the skins:

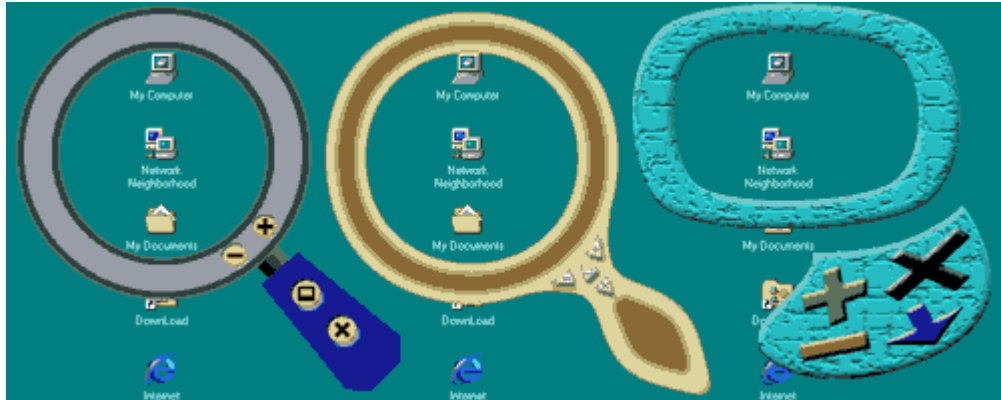


Figure 11: Lens tool with different skins.

Lens has some customizable options ([Figure 12](#)). You can tune up the program to match your preferences.

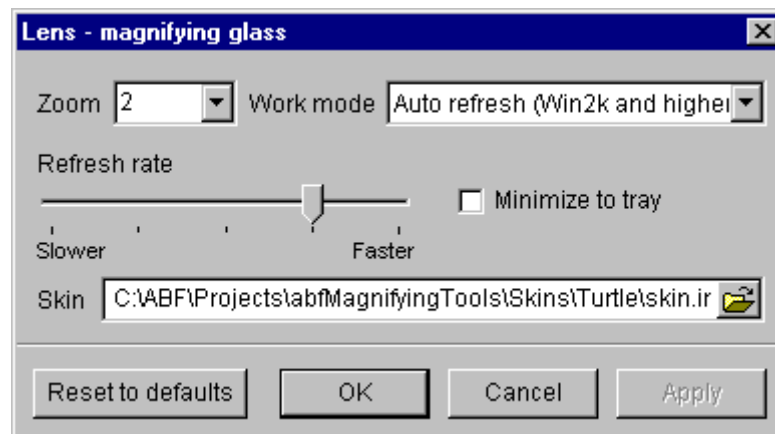


Figure 12: Lens options.

You can specify zoom, refresh rate, and the name of skin file. For Win2k and higher there are some working modes, you can choose a preferred one. Also you can use a popup menu ([Figure 13](#)) to manage the program.

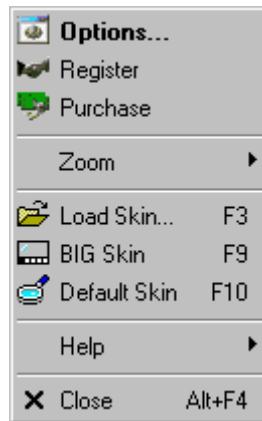


Figure 13: Lens popup menu.

Lens is always on top of other programs, so controlling by mouse, and especially by keyboard, is very important:

Movement:

Drag by mouse or use **Up, Down, Left, Right** keys and its combination with **Ctrl** and **Shift**.

Ctrl - speeds up movement.

Shift - should be used for precision movement.

Refresh:

DoubleClick or **Space** key.

Zoom:

Use "+" and "-" keys. Also use **F5-F8** keys.

F5 - minimum zoom.

F6 - zoom out.

F7 - zoom in.

F8 - maximum zoom.

Skin manipulation:

F3 - loads/changes the skin.

F9 - sets a **BIG** skin (special for people with poor eyesight).

F10 - sets a default skin.

System events:

Esc or **Alt+Down** - minimizes program.

Alt+F4 - closes program.

Help commands:

F1 - shows Help manual.

Alt+F1 - shows About dialog.

2.4 Magnifier

Magnifier is a magnifying panel that shows the area around cursor in different zooms ([Figure 14](#)). The panel can be float or aligned to any side of the screen.

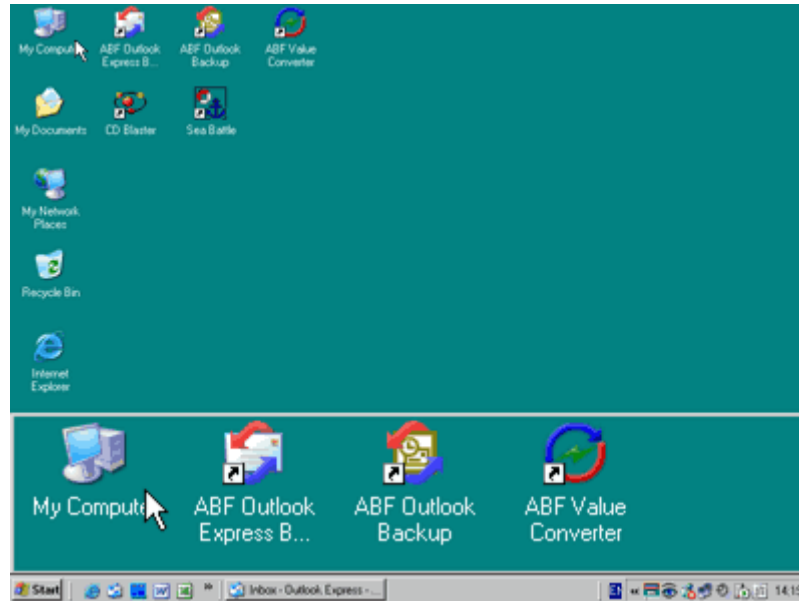


Figure 14: Magnifier tool on the bottom of desktop.

Magnifier has some customizable options ([Figure 15](#)). You can tune up the program to match your preferences.

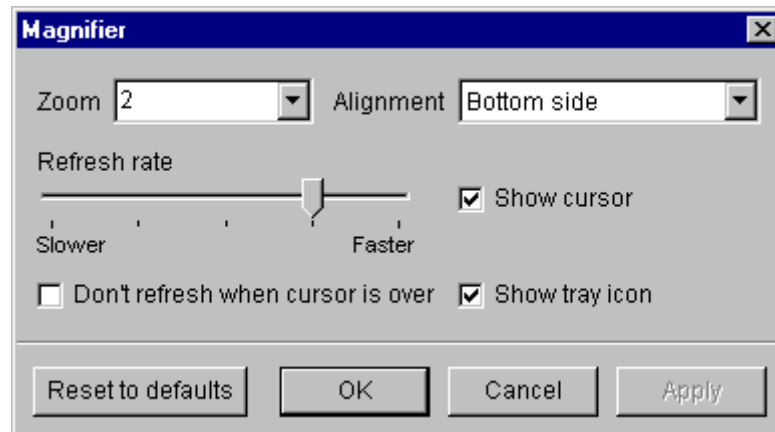


Figure 15: Magnifier options.

You can specify zoom, refresh rate, and turn on/off the cursor image or the tray icon. Also you can use a popup menu ([Figure 16](#)) to manage the program.

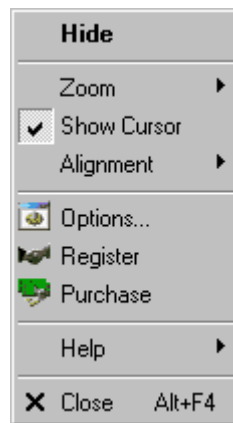


Figure 16: Magnifier popup menu.

2.5 Upgrade

ABF Magnifying Tools can upgrade itself from the web. You should be connected to the Internet to provide an upgrading. To start the upgrading process, click an **Upgrade** item in the popup menu of the **Launcher** tool (Figure 7) or the **Upgrade** button in the **About** dialog. The application will check is the new version available or not.

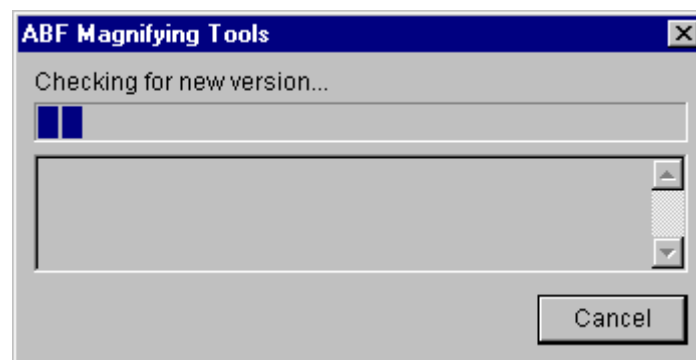


Figure 17: Checking for new version.

If the new version has been found, press appeared **Upgrade** button to complete the process.

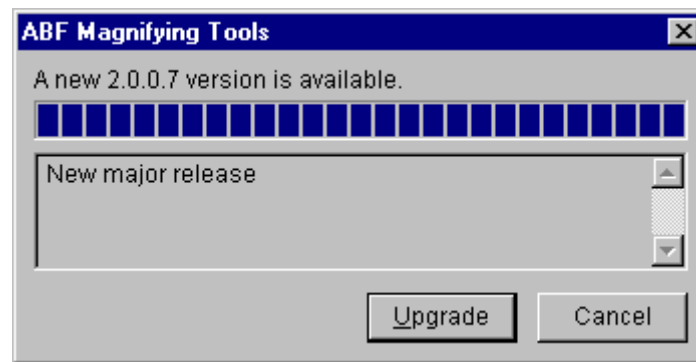


Figure 18: New version has been found.

If the new version has not been found, following message will appear.

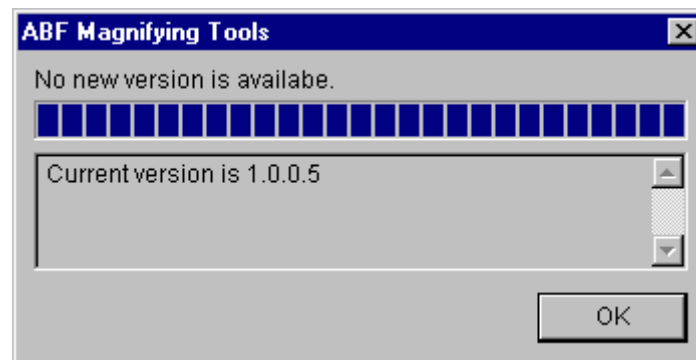


Figure 19: New version has not been found.

If there was a problem with connection to the Internet, following message will appear.

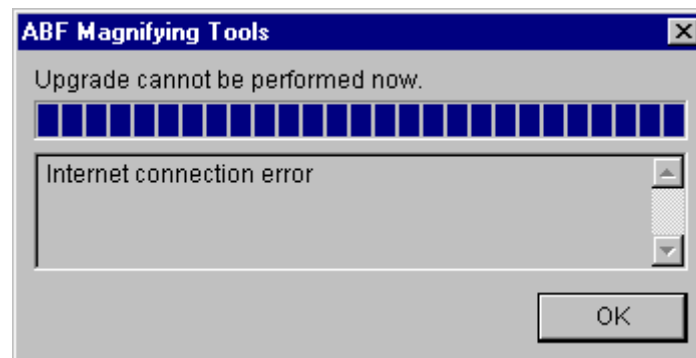


Figure 20: Problem with connection to the Internet.

Back Cover